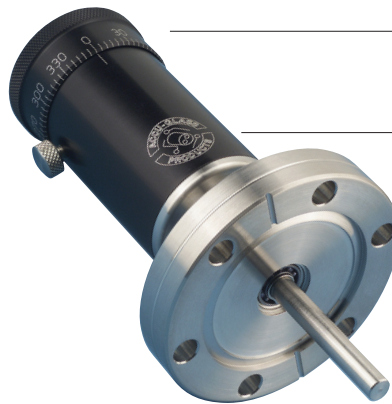


Accu-Glass Products high-torque HTR series rotary motion feedthroughs are designed to operate at temperatures as high as 250°C and rotational torque up to 250 in-oz.

They are constructed of black-anodized aluminum and stainless steel, where only stainless steel surfaces are exposed to the vacuum environment.

In vacuum bearings are dry-film lubricated with tungsten-disulfide, while air side bearings are lubricated with high-temperature Krytox® lubricant. The rotation shaft is sealed with an AM-350 edge-welded bellows.

Feedthrough rotation can be monitored *via* a 360° / 5° increment laser-etched scale found on the manual actuator knob. Rotary feedthroughs are available on Conflat® style CF metal seal or ISO-KF style elastomer seal flanges.



Manual actuator

Welded bellows seal

Two high vacuum and two ultrahigh vacuum flange sizes

Features

- All precision bearings — no bushings
- Improved shaft coupling designed for high torque, rated to 250 in-oz
- High temperature rated to 250°C
- UHV compatible construction
- Conflat® compatible flange mounts
- ISO compatible flange mounts
- Welded bellows seal
- Manual actuator
- Continuous rotary motion
- Rotary position lock
- Optional stepper motor or air actuator

Specifications

Specifications Notes

1 Overall assembly ratings must be adjusted to that of the lowest rated component.

All dimensions are in inches unless specified otherwise.

Material	
Body	SST
Housing	Anodized Al
Bellows, Edge-Welded	AM-350
Vacuum Range	
UHV, Ultrahigh vacuum	1x10 ⁻¹⁰ Torr
HV, High vacuum	1x10 ⁻⁸ Torr
Temperature Range ¹	
Feedthrough	250°C
Flange, CF Style	450°C

Flange, ISO Style	150°C
Load	
Torque	250 in-oz maximum
Axial	6 lb maximum
Lateral	10 lb maximum
Speed	
Rotary	1000 RPM
Resolution	
Rotary Scale	5° (Degrees)