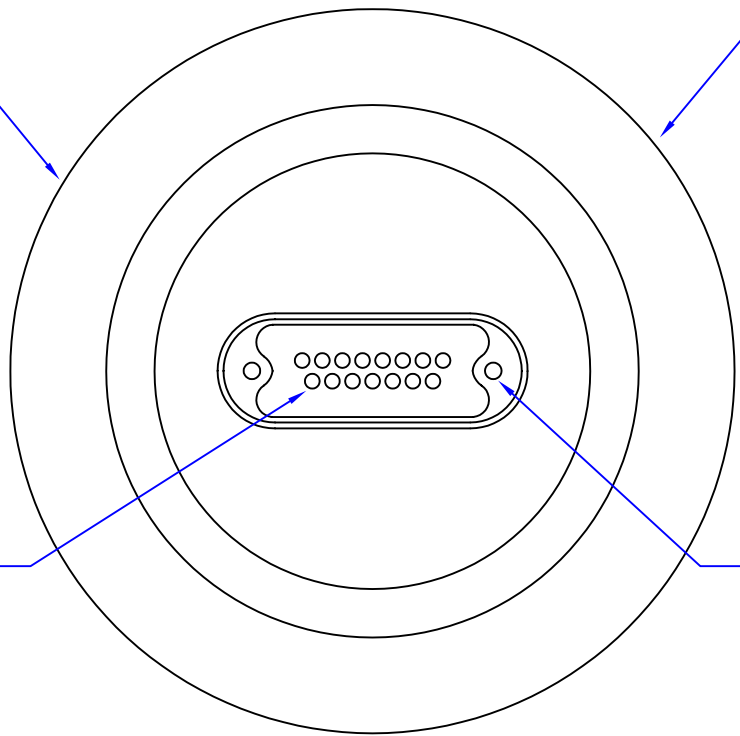


REVISIONS			
REV	DESCRIPTION	DATE	APPROVED

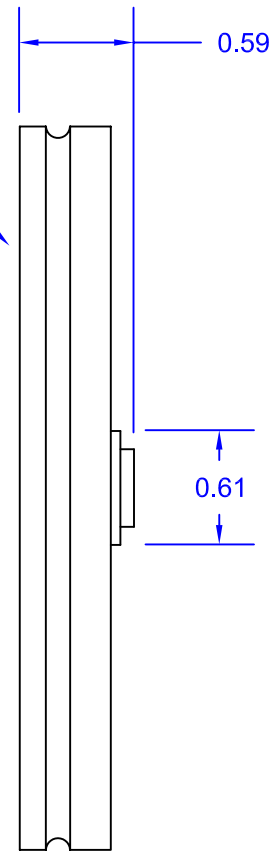
- 1 ISO: NW63 LF Flange
- 2 4-40 UNC x .160 deep 4 places

1 3.74 O.D.

0.040 pin Dia.  
TYP



VACUUM SIDE



2



Accu-Glass Products Inc.  
700 Arroyo Ave.  
San Fernando, CA. 91340  
TEL. 818-365-4215  
FAX. 818-365-7074

Notes :

**\* UNCONTROLLED WEB COPY \***

Material <b>304 SS</b>	
Tolerances unless otherwise specified	
Decimal	Angular
.xx= +/- .005	+/- 1°
.xxx= +/- .002	

Title <b>15D-L63</b>			
15-Pin Sub-D Feedthrough on a NW63 LF Flange			
Drawn By	M.Wilson	DWG NO.	100214
Approved			Date 6-18-97
			Cage Code : 4HCQ8