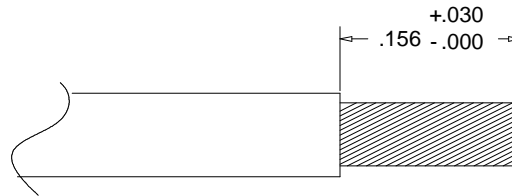
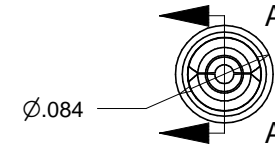
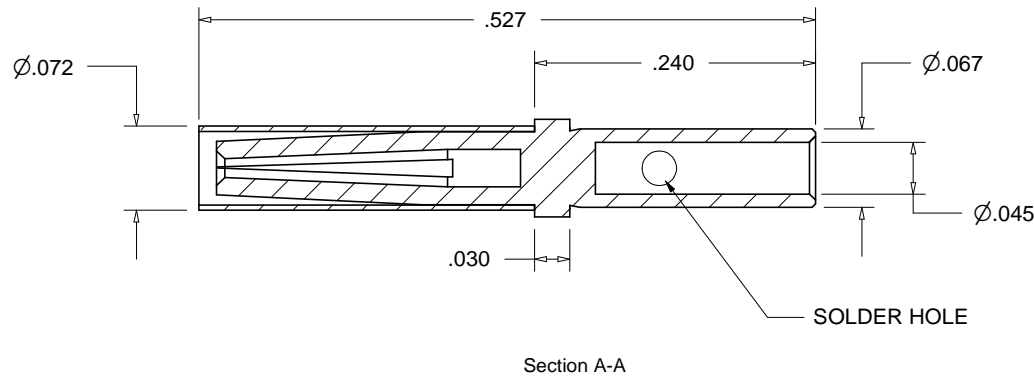
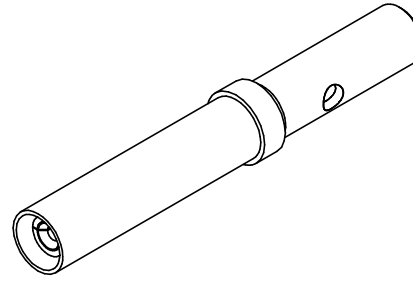


PROPRIETARY AND CONFIDENTIAL
 THE INFORMATION CONTAINED IN THIS
 DRAWING IS THE SOLE PROPERTY OF
 ACCU-GLASS PRODUCTS INC. ANY
 REPRODUCTION IN PART OR AS WHOLE
 WITHOUT THE WRITTEN PERMISSION OF
 ACCU-GLASS PRODUCTS INC. IS
PROHIBITED.

Rev	Description	Date	Approved



WIRE STRIPPING REQUIREMENTS
 NO SCALE

RELATED PRODUCTS, TYPE-T1 TOOLS / SUPPLIES
P/N 100190, CRIMP TOOL FOR TYPE-T1 CONTACTS WITH 111315 POSITIONER
P/N 100193, DCT-2 CRIMP TOOL FOR TYPE-T2 CONTACTS
P/N 110796, UHV-SOLDER
P/N 110797, SOLDER FLUX



Accu-Glass Products Inc.
 700 Arroyo Ave.
 San Fernando, CA 91340
 TEL 818-365-4215
 FAX 818-365-7074
 accuglassproducts.com

- Notes:
1. DIMENSIONS SYMMETRICAL ABOUT CENTERLINES
 2. CONTACT MAY BE SOLDERED OR CRIMPED
 3. CRIMP POT WILL ACCOMMODATE #20, #22 OR #24 AWG STRANDED WIRE

UNCONTROLLED WEB COPY

Material
**GOLD PLATED COPPER
 ALLOY, 304 SS**

Tolerances unless otherwise
 specified.

.X ± .03	Angular: +/- .5°
.XX ± .01	Finish: Min. 63 Ra
.XXX ± .005	

Title: **GS-10-S
 HIGH USE CONTACT 20-24 AWG**

Drawn By Date	CR 073009	DWG. NO. 110908	Rev. A
Approved	CM	Sheet 1 OF 1	