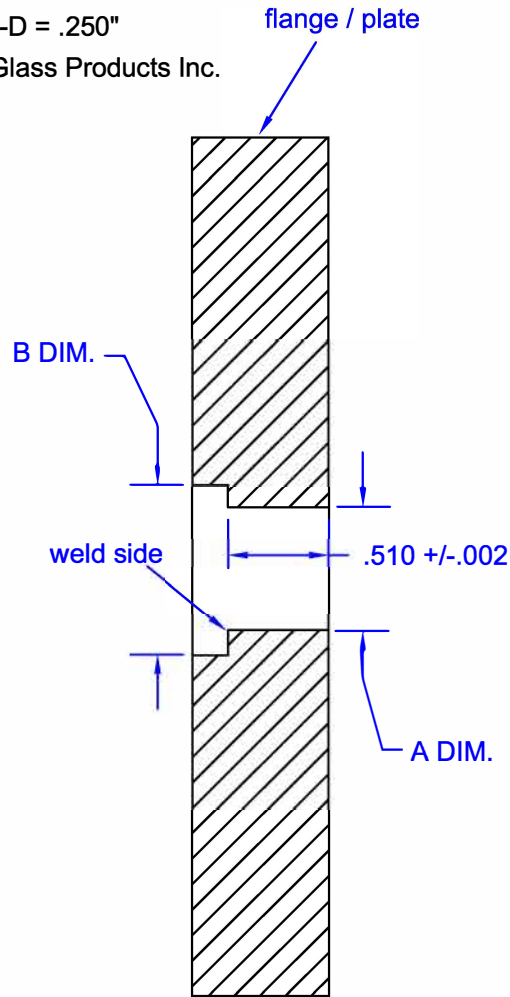
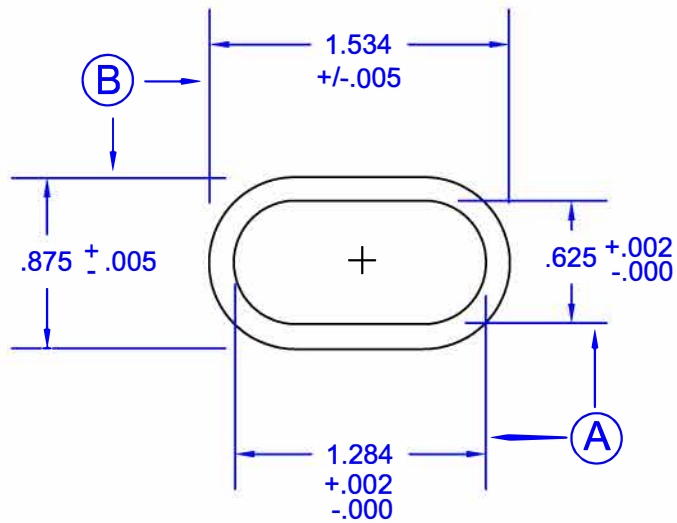
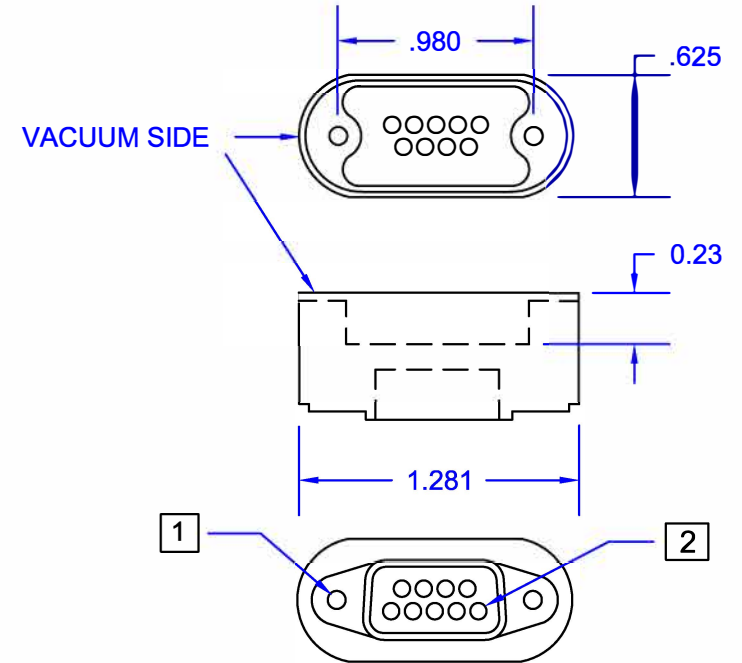


- NOTES : 1. B Dim. not needed for flanges / plates less than .500 thick.  
 2. Space required between connectors : 9 Sub-D = .250"  
 3. Flanges .700" thick or larger Contact Accu-Glass Products Inc.



REVISIONS			
REV	DESCRIPTION	DATE	APPROVED

- 1 4-40 UNC Thread Both sides.
- 2 0.040 Pin Dia TYP.



Accu-Glass Products Inc.  
 25047 Anza Drive  
 Valencia, CA 91355  
 TEL 818-365-4215  
 FAX 818-365-7074  
 accuglassproducts.com

Notes :

**\* UNCONTROLLED WEB COPY \***

Material <b>304 SS</b>	
Tolerances unless otherwise specified	
Decimal .xx= +/- .005 .xxx= +/- .002	Angular +/- 1°

Title <b>9 Pin Sub-D Feedthrough</b>			
Drawn By	M.Wilson	DWG NO.	EAG-9D
Approved			Date 7-11-07
			Cage Code : 4HCQ8