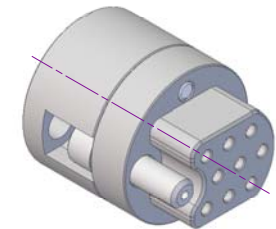


Notes

- Caution!** When used with 9-Pin Subminiature-C feedthroughs (not shown), Pin-1 position is reversed (mirrored) from air to vacuum side. This is due to feedthrough's straight through (male-male) pin construction. This condition can be addressed in one of three ways...
 - Wire air-side (or vacuum-side) connectors accordingly...
 - Use an air-side (or vacuum-side) gender adapter...
 - Use a female-female extension cable assembly.
- Connectors do not include contacts... and these must be purchased separately. See table (below) for available contact options and tools.
- Thread wires through connector back-shell before crimping contacts.
- Pin position numbers do not appear on connector and are provided for reference only.

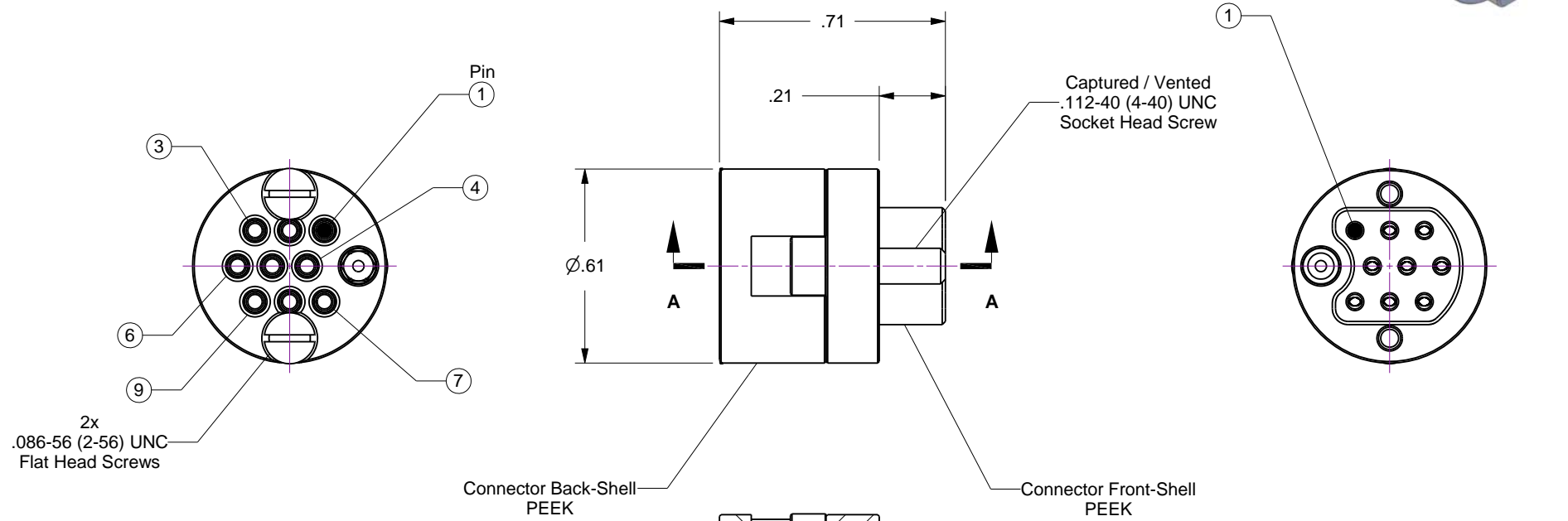
Rev	Description	Date
C	Remodeled	



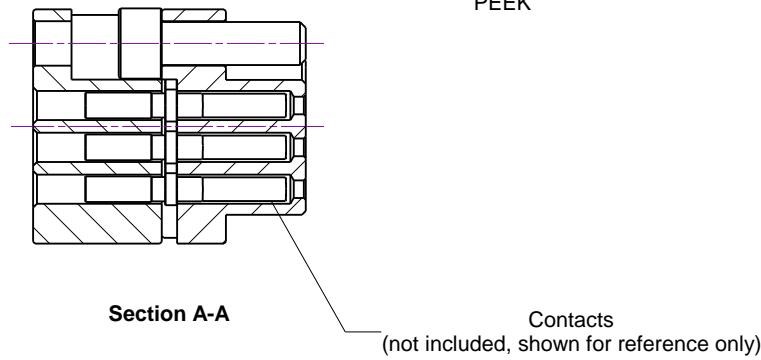
A

B

C



Part No.	Description	For Wire Size
100180	Standard	20-24 AWG
110908	High Duty Cycle	
100181	Standard	26-30 AWG
110909	High Duty Cycle	
100190	Crimp Tool for Type T1 Contacts	



D



Accu-Glass Products Inc.
 25047 Anza Drive
 Valencia, CA 91355
 T 818-365-4215
 F 818-365-7074
 www.accuglassproducts.com

UNCONTROLLED WEB DRAWING

Proprietary and Confidential
 The information contained in this drawing is the sole property of Accu-Glass, Products Inc. Any reproduction, in part or as whole, without the written permission of Accu-Glass Products, Inc., is strictly prohibited.

Material See Individual Components	
Tolerances, unless otherwise specified	
.X ± .030	Angles ± 0.5° Finish 63Ra
.XX ± .010 .XXX ± .005	

Title Connector, 9-Pin Subminiature-C Female			
Drawn by Date	Ligeti 8/19/2014	No. 100150	Rev. C
Approved			Sheet