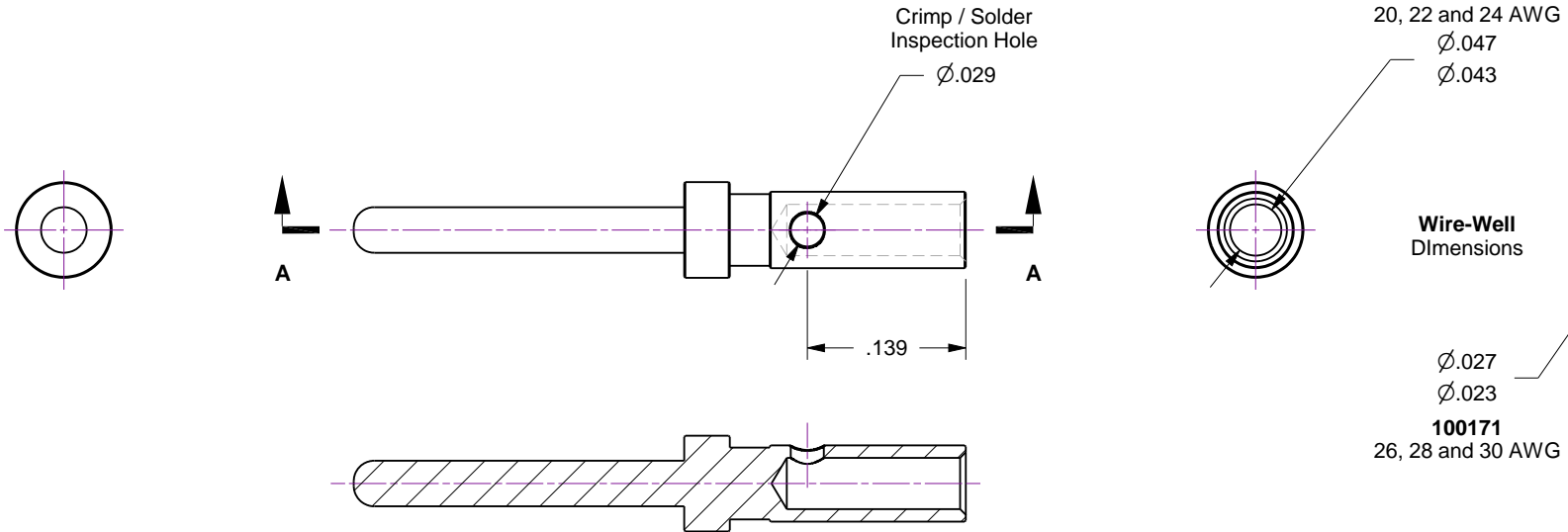
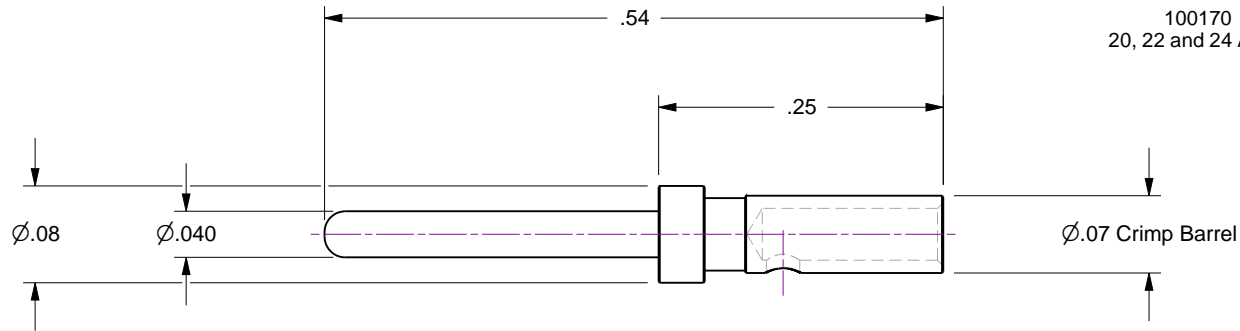
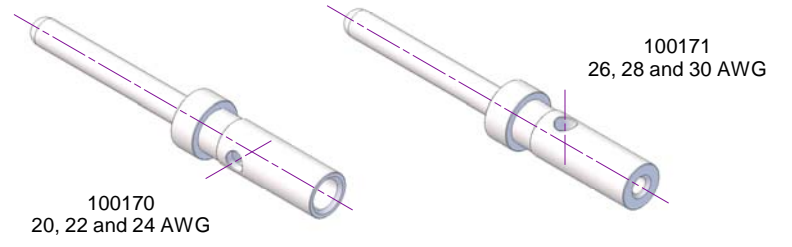


Notes

1. These are Type-T1 male pin contacts... they can be crimped or soldered.
2. Aside from wire-well diameter, all contact dimensions are identical
3. Part No. 100170 accommodates 20, 22 and 24 AWG wire sizes
4. Part No. 100171 accommodates 26, 28 and 30 AWG wire sizes
5. Recommended Crimp Tool... Part No. 100190
6. Recommended Vacuum Solder / Flux... Part No. 110796 / 110797 respectively
7. Strip wire insulation .156 to .186 before crimping or soldering

Rev	Description	Date
B	Remodeled	



Section A-A



**Accu-Glass Products Inc.**  
 25047 Anza Drive  
 Valencia, CA 91355  
 T 818-365-4215  
 F 818-365-7074  
 www.accuglassproducts.com

**UNCONTROLLED WEB DRAWING**

Proprietary and Confidential  
 The information contained in this drawing is the sole property of Accu-Glass, Products Inc. Any reproduction, in part or as whole, without the written permission of Accu-Glass Products, Inc., is strictly prohibited.

Material Copper Alloy, Au Plated	
Tolerances, unless otherwise specified	
.X ± .030	Angles ± 0.5° Finish 63Ra
.XX ± .010	
.XXX ± .005	

Title Contact, .040 Male, Crimp			
Drawn by Date	Ligeti 9/3/2014	No. <b>100170, 100171</b>	Rev. <b>B</b>
Approved			Sheet

A

B

C

D