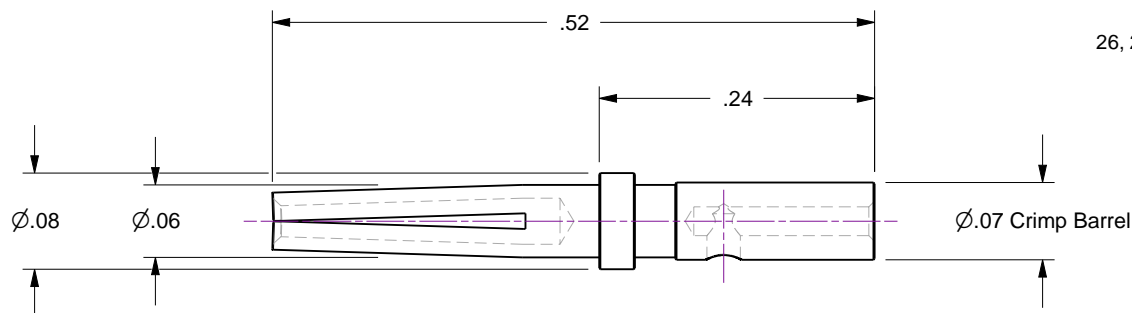
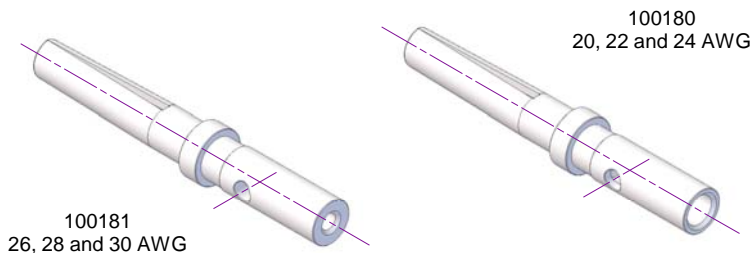


Notes

- 1. These are Type-T1 contacts... they can be crimped or soldered.
- 2. Aside from wire-well diameter, all contact dimensions are identical
- 3. Part No. 100180 accommodates 20, 22 and 24 AWG wire sizes
- 4. Part No. 100181 accommodates 26, 28 and 30 AWG wire sizes
- 5. Recommended Crimp Tool... Part No. 100190
- 6. Recommended Vacuum Solder / Flux... Part No. 110796 / 110797 respectively
- 7. Strip wire insulation .156 to .186 before crimping or soldering

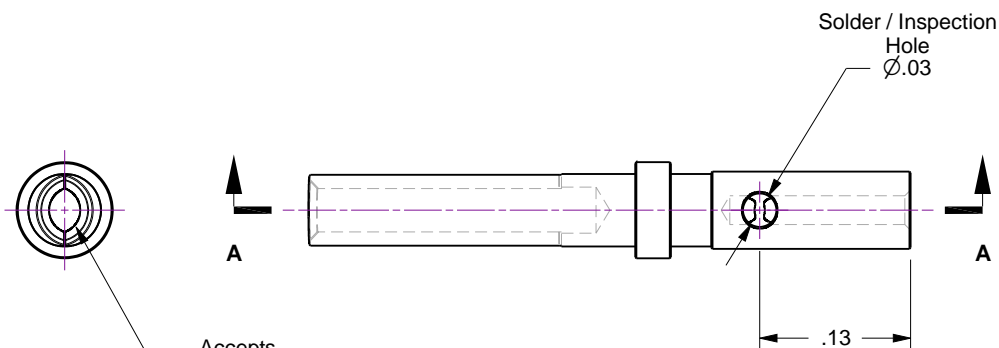
Rev	Description	Date
B	Remodeled	



Wire-Well Dimensions

100181
26, 28 and 30 AWG
 $\phi .027$
 $\phi .023$

100180
20, 22 and 24 AWG
 $\phi .047$
 $\phi .043$



Accepts
 $\phi .040$ Pin

Section A-A



Accu-Glass Products Inc.
25047 Anza Drive
Valencia, CA 91355
T 818-365-4215
F 818-365-7074
www.accuglassproducts.com

UNCONTROLLED WEB DRAWING

Proprietary and Confidential
The information contained in this drawing is the sole property of Accu-Glass, Products Inc. Any reproduction, in part or as whole, without the written permission of Accu-Glass Products, Inc., is strictly prohibited.

Material Copper Alloy, Au Plated	
Tolerances, unless otherwise specified	
.X \pm .030	Angles \pm 0.5° Finish 63Ra
.XX \pm .010	
.XXX \pm .005	

Title Contact, .040 Female, Crimp			
Drawn by Date	Ligeti 9/2/2014	No. 100180, 100181	Rev. B
Approved			Sheet