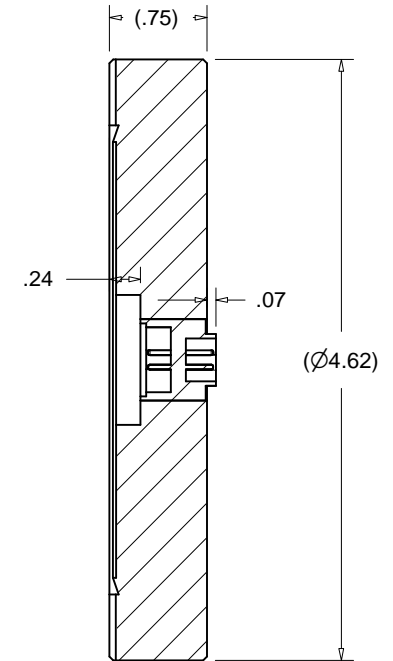
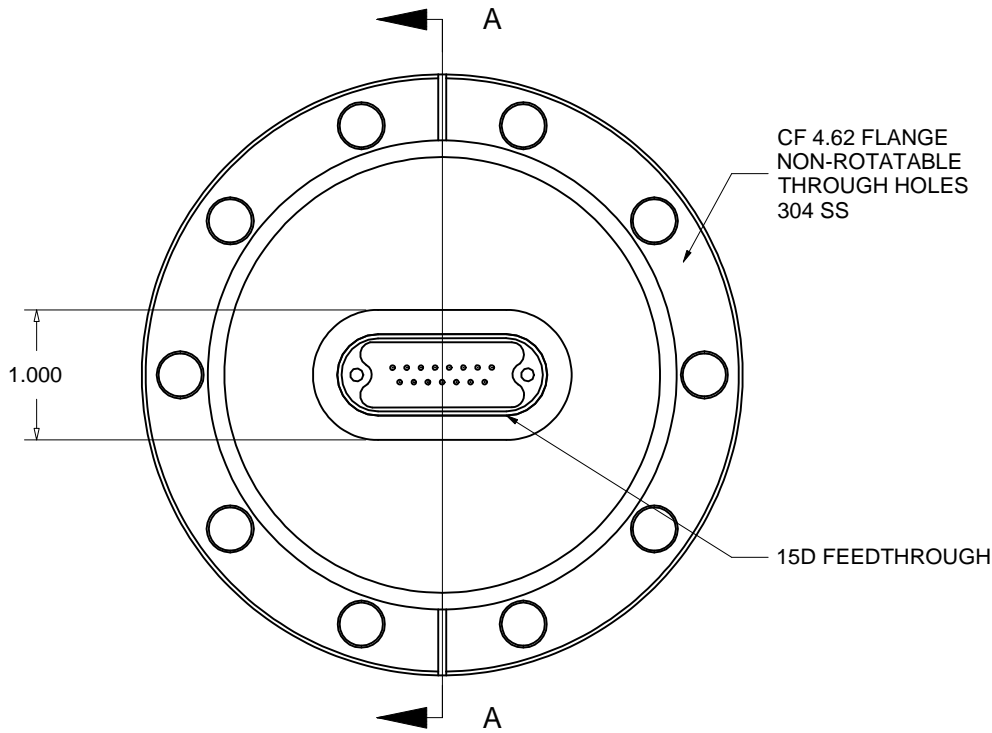
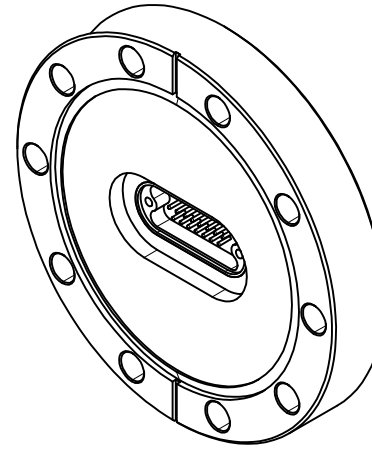


PROPRIETARY AND CONFIDENTIAL
 THE INFORMATION CONTAINED IN THIS
 DRAWING IS THE SOLE PROPERTY OF
 ACCU-GLASS PRODUCTS INC. ANY
 REPRODUCTION IN PART OR AS WHOLE
 WITHOUT THE WRITTEN PERMISSION OF
 ACCU-GLASS PRODUCTS INC. IS
PROHIBITED.

| | |
|------------------------|--|
| Specifications: | |
| Voltage | 500 VDC |
| Current | 5A Max. @ 20° C (per pin up to 20% of total number of pins) |
| Temperature | -200 °C to 250° C |
| Vacuum Level | UHV 1x10 ⁻¹⁰ Torr. |

| Rev | Description | Date | Approved |
|-----|-------------|------|----------|
| | | | |



| | |
|-------------------------|-----------------------------|
| Related Flange Hardware | 4.62" CF Flange |
| P/N 200830, | Copper Gasket |
| P/N 200833, | Bolts, Nuts and Washers set |



Accu-Glass Products Inc.
 25047 Anza Drive
 Valencia, CA 91355
 TEL 818-365-4215
 FAX 818-365-7074
 accuglassproducts.com

Notes:
 1. No detectable leaks @ 5x10⁻¹⁰ cc/s He.

UNCONTROLLED WEB COPY

| | |
|--|-----------------------|
| Material SEE ABOVE | |
| Tolerances unless otherwise specified. | |
| .X ± .03 | Angular: +/- .5° |
| .XX ± .01 | Finish: Min. 63 Ra |
| .XXX ± .005 | |

| | | | |
|---|--------------|---------------------------|---------------|
| Title: 15D-462 CF 4.62 FLANGE WITH 15D FEEDTHROUGH | | | |
| Drawn By Date | CR 061109 | DWG. NO. 100215 | Rev. A |
| Approved | C M | PDFE | Sheet 1 OF 1 |