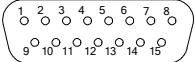
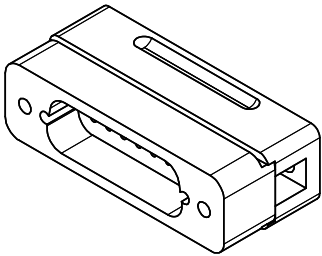


PROPRIETARY AND CONFIDENTIAL
THE INFORMATION CONTAINED IN THIS
DRAWING IS THE SOLE PROPERTY OF
ACCU-GLASS PRODUCTS INC. ANY
REPRODUCTION IN PART OR AS WHOLE
WITHOUT THE WRITTEN PERMISSION OF
ACCU-GLASS PRODUCTS INC.IS
PROHIBITED.

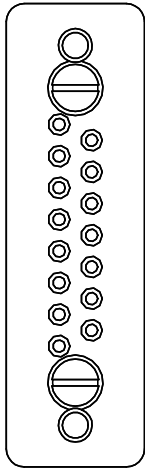
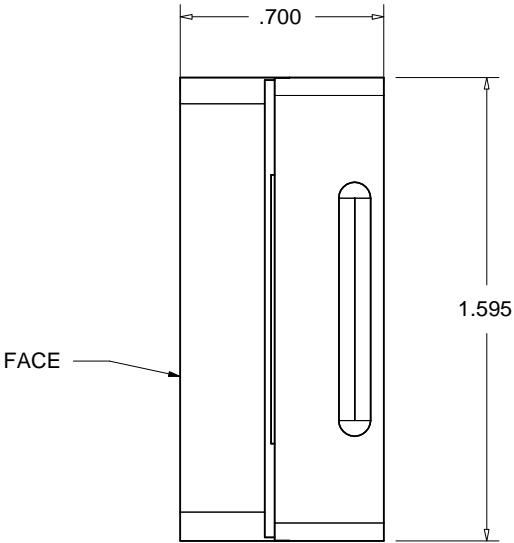
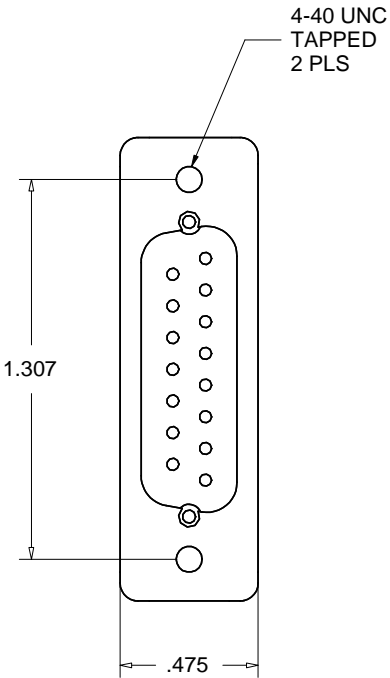
PIN NUMBER ASSIGNMENTS
MALE 15D CONNECTOR



FACE VIEW



Rev	Description	Date	Approved
A	INITIAL RELEASE	022310	C M



RELATED CONTACTS, TYPE-T1 (MALE)
P/N 100170, STANDARD, USE WITH 20-24AWG WIRE
P/N 100171, STANDARD, USE WITH 26-30AWG WIRE
P/N 100190, CRIMP TOOL FOR TYPE-T1 CONTACTS
P/N 100455, BACKSHELL STRAIN RELIEF

*NOTE: CONTACT RETAINING COMBS INCLUDED (NOT SHOWN)



Accu-Glass Products Inc.
25047 Anza Drive,
Valencia, CA 91355
TEL 818-365-4215
FAX 818-365-7074
accuglassproducts.com

- Notes:
1. DIMENSIONS SYMMETRICAL ABOUT CENTERLINES
 2. CONTACTS NOT INCLUDED

UNCONTROLLED WEB COPY

Material PEEK / STAINLESS		Title: 15D-PKP PEEK 15D MALE CONNECTOR ASSEMBLY		
Tolerances unless otherwise specified.		Drawn By Date	CR 2/2/2010	DWG. NO. 100410
.X ± .03	Angular: +/- .5°	Approved		Rev. A
.XX ± .01	Finish: Min. 63 Ra	C M		
.XXX ± .005		PDFE		Sheet 1 OF 1