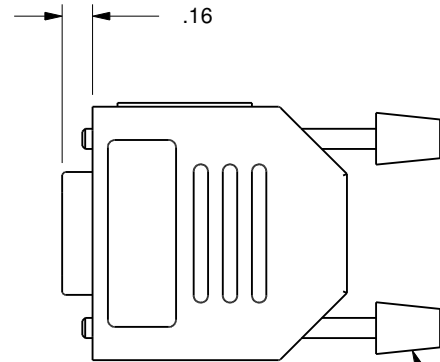
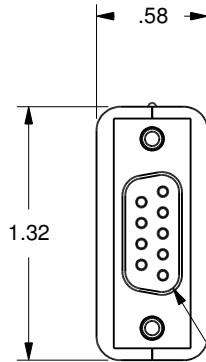
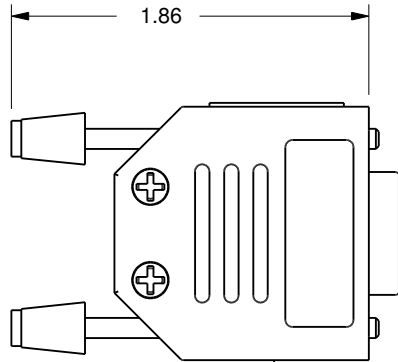
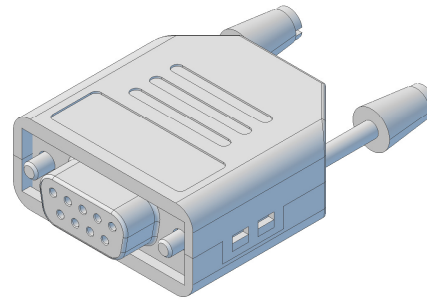


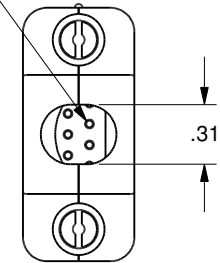
Notes

1. Dimensions Symmetrical About Centerlines.

Rev	Description	Date
B	Body Dimensions and Screws Changed	3/20/17 Farrell
A	Initial Release	2/8/12 CR



Accepts Up To  
28 AWG Wires,  
Contacts Are  
Gold Plated  
Solder Cup With  
Hood Design



Unshielded Plastic  
Strain Relief

Subminiature-D  
9 Pin Female  
Configuration

2x Knurled Screws

**UNCONTROLLED WEB DRAWING**

Proprietary and Confidential  
The information contained in this drawing is the sole property of Accu-Glass, Products Inc. Any reproduction, in part or as whole, without the written permission of Accu-Glass Products, Inc., is strictly prohibited.

Material  
See Individual Components

Tolerances,  
unless otherwise specified

.X ± .030	Angles ± 0.5° Finish 63Ra
.XX ± .010	
.XXX ± .005	

Title

9D-AIR

Drawn by  
Date

Farrell  
3/20/2017

No. **103100**

Rev. **B**

Approved

Sheet



**Accu-Glass Products Inc.**  
25047 Anza Drive  
Valencia, CA 91355  
T 818-365-4215  
F 818-365-7074  
www.accuglassproducts.com