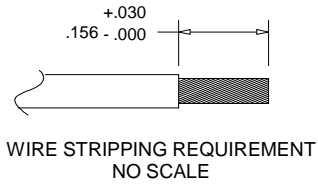
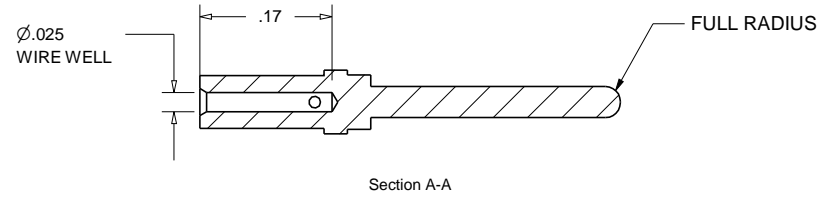
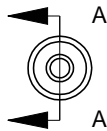
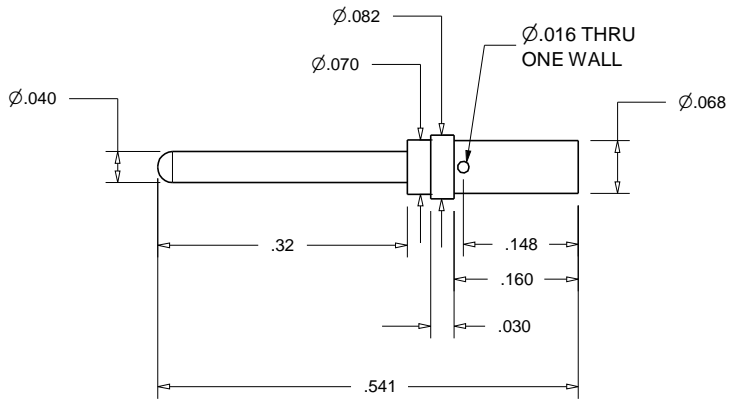
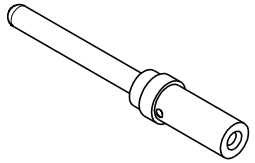


**PROPRIETARY AND CONFIDENTIAL**  
 THE INFORMATION CONTAINED IN THIS DRAWING IS THE SOLE PROPERTY OF ACCU-GLASS PRODUCTS INC. ANY REPRODUCTION IN PART OR AS WHOLE WITHOUT THE WRITTEN PERMISSION OF ACCU-GLASS PRODUCTS INC. IS **PROHIBITED.**

Rev	Description	Date	Approved
A	INITIAL RELEASE		



RELATED PRODUCTS, TYPE T2 CONTACTS
P/N 100193 CRIMP TOOL FOR TYPE-T2 CONTACTS
P/N 110796 UHV SOLDER
P/N 110797 SOLDER FLUX
P/N 100936 EXTRACTION TOOL FOR TYPE-T2 CONTACTS



Accu-Glass Products Inc.  
 25047 Anza Drive  
 Valencia, CA 91355  
 TEL 818-365-4215  
 FAX 818-365-7074  
 accuglassproducts.com

Notes:  
 1. DIMENSIONS SYMMETRICAL ABOUT CENTERLINES

**\* UNCONTROLLED WEB COPY \***

Material GOLD PLATED COPPER ALLOY	
Tolerances unless otherwise specified.	
.X ± .03	Angular: +/- .5°
.XX ± .01	Finish: Min. 63 Ra
.XXX ± .005	

Title: <b>HVGP2-10</b> FOR 26-30 AWG WIRE			
Drawn By Date	C REYNOLDS 092412	DWG. NO. <b>110036</b>	Rev. <b>A</b>
Approved	JAMIE F.	PDFE	Sheet 1 OF 1