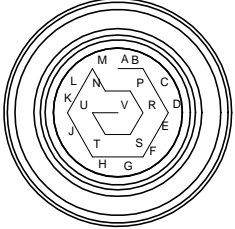
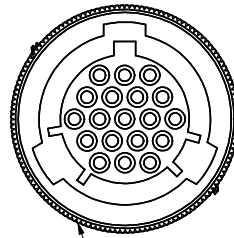
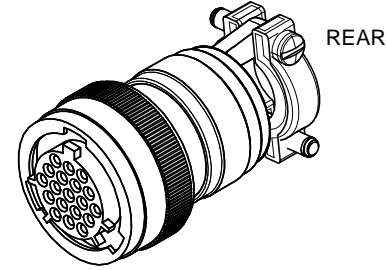


**PROPRIETARY AND CONFIDENTIAL**  
 THE INFORMATION CONTAINED IN THIS DRAWING IS THE SOLE PROPERTY OF ACCU-GLASS PRODUCTS INC. ANY REPRODUCTION IN PART OR AS WHOLE WITHOUT THE WRITTEN PERMISSION OF ACCU-GLASS PRODUCTS INC. IS **PROHIBITED.**

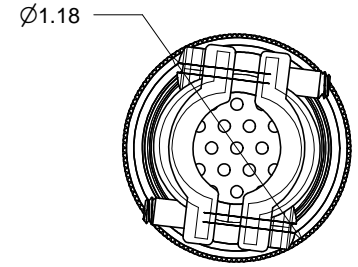
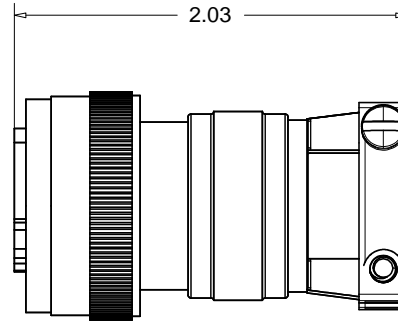
HOLE LETTER ASSIGNMENTS  
 REAR VIEW WITH  
 STRAIN RELIEF REMOVED



LETTERS MARKED ON PART  
 AS SHOWN



DIE CAST ALUMINUM WITH  
 ELECTRO-LESS NICKEL PLATING



NOTE: DIP CONTACTS INTO ISOPROPYL ALCOHOL JUST PRIOR TO INSERTING THEM INTO CONNECTOR FOR SMOOTH CONTACT INSERTION

RELATED CONTACTS, TYPE-T5i, AIR-SERVICE  
 P/N 110235, GS-M40-10, FOR 20-24AWG WIRE  
 P/N 110702, CRIMP TOOL, TYPE T-5i AND T-5p  
 P/N 111612, EXTRACTION TOOL, FOR TYPE-T5i CONTACTS  
 P/N 111611, INSERTION TOOL, FOR TYPE-T5i CONTACTS



Accu-Glass Products Inc.  
 25047 Anza Drive  
 Valencia, CA 91355  
 TEL 818-365-4215  
 FAX 818-365-7074  
 accuglassproducts.com

Notes:  
 1. CONNECTORS DO NOT INCLUDE CONTACTS.  
 2. CONTACT INSERTION AND EXTRACTION TOOLS INCLUDED.

**\*UNCONTROLLED WEB COPY\***

Material ASSEMBLY	
Tolerances unless otherwise specified.	
.X ± .03	Angular: +/- .5°
.XX ± .01	Finish: Min. 63 Ra
.XXX ± .005	

Title: <b>19C-AIR</b> <b>19C AIR SIDE FEMALE CONNECTOR ASS'Y</b>			
Drawn By Date	CR 081809	DWG. NO. 110234	Rev. A
Approved	CM	PDFE	Sheet 1 OF 1

Rev	Description	Date	Approved
A	INITIAL RELEASE	020310	C M