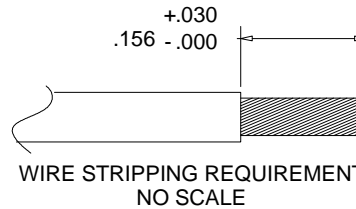
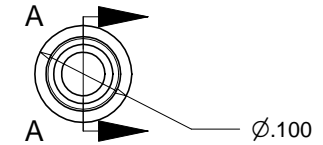
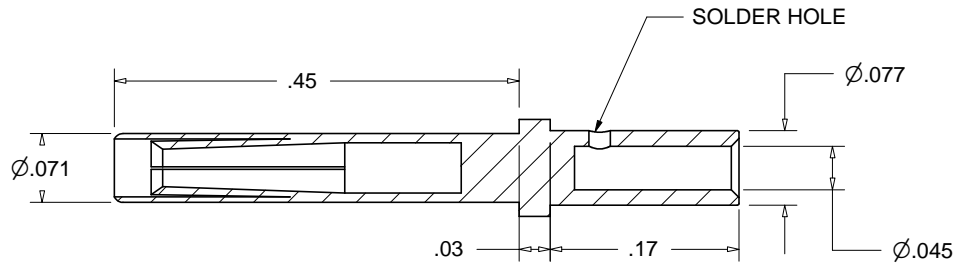
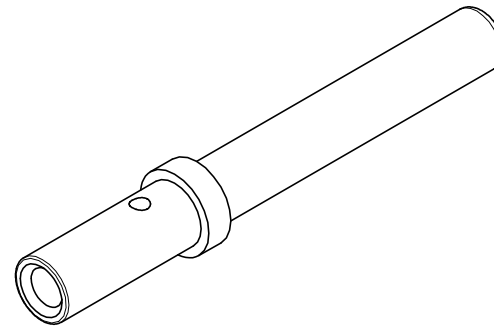


PROPRIETARY AND CONFIDENTIAL
 THE INFORMATION CONTAINED IN THIS DRAWING IS THE SOLE PROPERTY OF ACCU-GLASS PRODUCTS INC. ANY REPRODUCTION IN PART OR AS WHOLE WITHOUT THE WRITTEN PERMISSION OF ACCU-GLASS PRODUCTS INC. IS **PROHIBITED.**

Rev	Description	Date	Approved
A	INITIAL RELEASE	020410	C M



RELATED PRODUCTS, TYPE-T5 TOOLS / SUPPLIES
P/N 110702, CRIMP TOOL FOR TYPE-T5 CONTACTS
P/N 110796, UHV-SOLDER
P/N 110797, SOLDER FLUX
P/N 111611, INSERTION TOOL
P/N 111612, EXTRACTION TOOL



Accu-Glass Products Inc.
 25047 Anza Drive
 Valencia, CA 91355
 TEL 818-365-4215
 FAX 818-365-7074
 accuglassproducts.com

- Notes:
1. DIMENSIONS SYMMETRICAL ABOUT CENTERLINES
 2. CONTACTS MAY BE SOLDERED OR CRIMPED
 3. CRIMP POT WILL ACCOMMODATE #20, #22, OR #24 AWG STRANDED WIRE

*** UNCONTROLLED WEB COPY ***

Material	GOLD PLATED COPPER STAINLESS	
Tolerances unless otherwise specified.		
.X ± .03	Angular:	+/- 5°
.XX ± .01	Finish:	Min. 63 Ra
.XXX ± .005		

Title: GS-M40-10		CONTACT SOCKET HIGH-USE TYPE-T5i 20-24 AWG	
Drawn By	CR	DWG. NO.	110235
Date	2/4/2010	Rev.	A
Approved	C M	PDFE	Sheet 1 OF 1