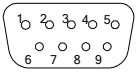


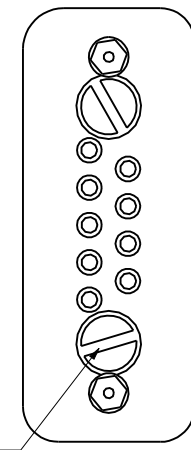
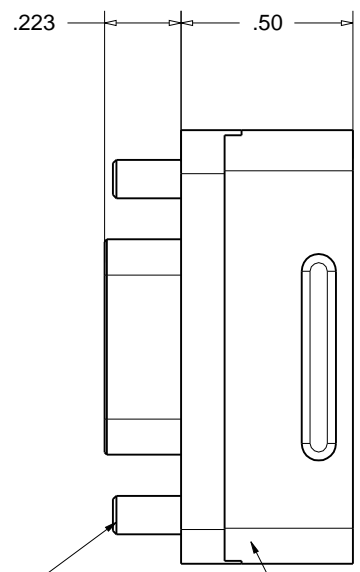
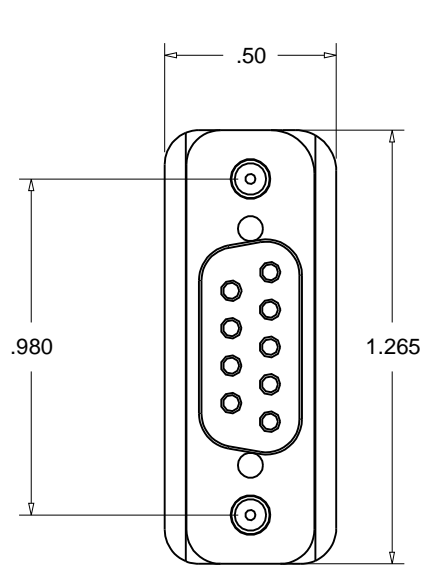
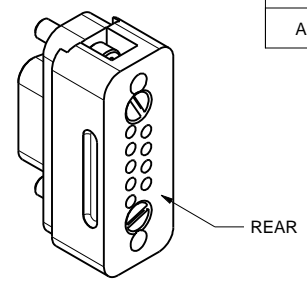
**PROPRIETARY AND CONFIDENTIAL**  
 THE INFORMATION CONTAINED IN THIS DRAWING IS THE SOLE PROPERTY OF ACCU-GLASS PRODUCTS INC. ANY REPRODUCTION IN PART OR AS WHOLE WITHOUT THE WRITTEN PERMISSION OF ACCU-GLASS PRODUCTS INC. IS **PROHIBITED.**

PIN NUMBER ASSIGNMENTS  
 FEMALE 9D CONNECTOR



REAR VIEW

Rev	Description	Date	Approved
A	INITIAL RELEASE		



VENTED  
 4-40 SOCKET HEAD  
 CAPSCREW  
 STAINLESS  
 2 EA

MACOR  
 BOTTOM PIECE

2-56 UNC  
 STAINLESS  
 2 PLS

RELATED CONTACTS, TYPE-T1
P/N 100180, STANDARD, USE WITH 20-24AWG WIRE
P/N 100181, STANDARD, USE WITH 26-30AWG WIRE
P/N 110908, HIGH-USE, USE WITH 20-24AWG WIRE
P/N 110909, HIGH-USE, USE WITH 26-30AWG WIRE
P/N 100190, CRIMP TOOL FOR TYPE-T1 CONTACTS

**NOTES:**  
 CONTACT SOCKETS NOT INCLUDED.  
 WIRES MUST BE THREADED THROUGH BOTTOM PIECE BEFORE CRIMPING.  
 DO NOT OVER TIGHTEN SCREWS. THE MACOR WILL CRACK OR BREAK.

Notes:  
 1. DIMENSIONS SYM ABOUT CENTERLINES  
 2.



Accu-Glass Products Inc.  
 25047 Anza Drive  
 Valencia, CA 91355  
 TEL 818-365-4215  
 FAX 818-365-7074  
 accuglassproducts.com

**\*UNCONTROLLED WEB COPY\***

Material NOTED ABOVE	
Tolerances unless otherwise specified.	
.X ± .03	Angular: +/- .5°
.XX ± .01	Finish: Min. 63 Ra
.XXX ± .005	

Title: <b>9D-MCS</b>		DWG. NO. <b>110900</b>		Rev. <b>A</b>
<b>MACOR 9D FEMALE CONNECTOR ASSY</b>		Drawn By Date	CR 033009	Approved
		C M	PDFE	Sheet 1 OF 1