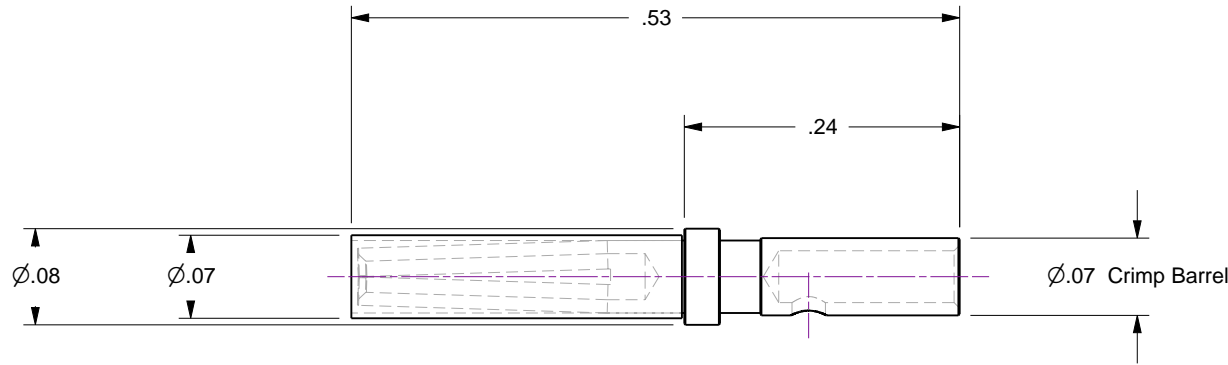
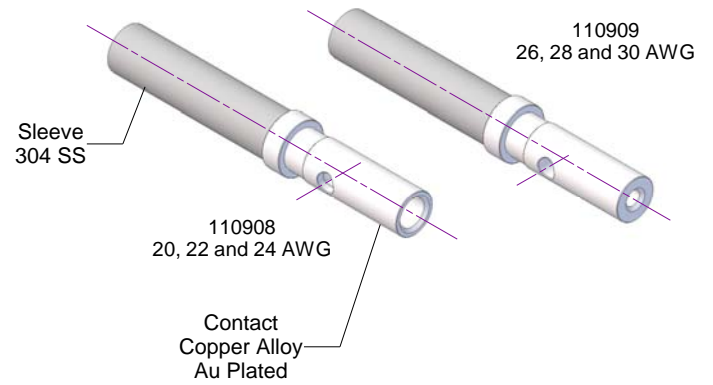


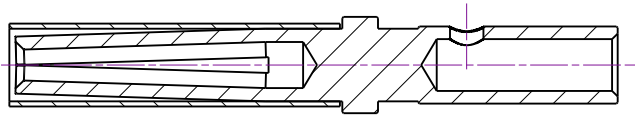
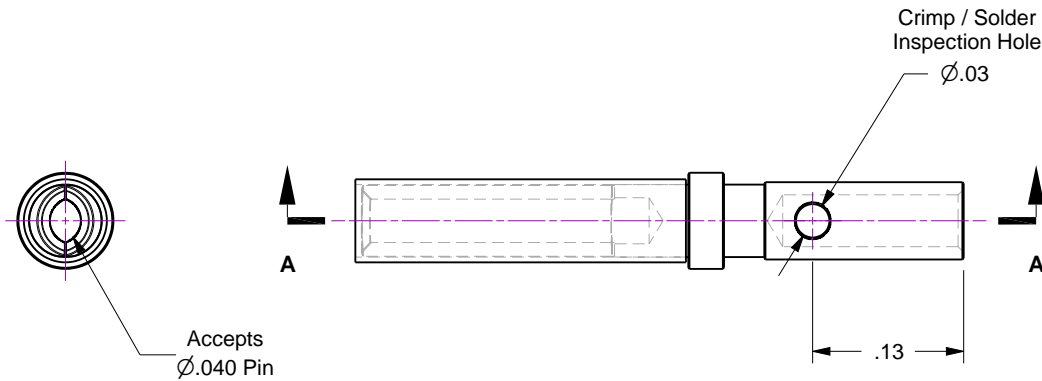
Notes

1. These are High Duty Cycle (HDC) Type-T1 contacts... they can be crimped or soldered.
2. Aside from wire-well diameter, all contact dimensions are identical
3. Part No. 110908 accommodates 20, 22 and 24 AWG wire sizes
4. Part No. 110909 accommodates 26, 28 and 30 AWG wire sizes
5. Recommended Crimp Tool... Part No. 100193 or 100190 with positioner tool 111315
6. Recommended Vacuum Solder / Flux... Part No. 110796 / 110797 respectively
7. Strip wire insulation .156 to .186 before crimping or soldering

Rev	Description	Date
B	Remodeled	



Wire-Well Dimensions	
<b>110908</b> 20, 22 and 24 AWG	<b>110909</b> 26, 28 and 30 AWG
Ø.047	Ø.027
Ø.043	Ø.023



Section A-A



**Accu-Glass Products Inc.**  
 25047 Anza Drive  
 Valencia, CA 91355  
 T 818-365-4215  
 F 818-365-7074  
 www.accuglassproducts.com

**UNCONTROLLED WEB DRAWING**

Proprietary and Confidential  
 The information contained in this drawing is the sole property of Accu-Glass, Products Inc. Any reproduction, in part or as whole, without the written permission of Accu-Glass Products, Inc., is strictly prohibited.

Material See Individual Parts	
Tolerances, unless otherwise specified	
.X ± .030	Angles ± 0.5°
.XX ± .010	Finish 63Ra
.XXX ± .005	

Title <b>Contact, .040 Female, Crimp HDC</b>			
Drawn by Date	Ligeti 9/3/2014	No. <b>110908, 110909</b>	Rev. <b>B</b>
Approved			Sheet