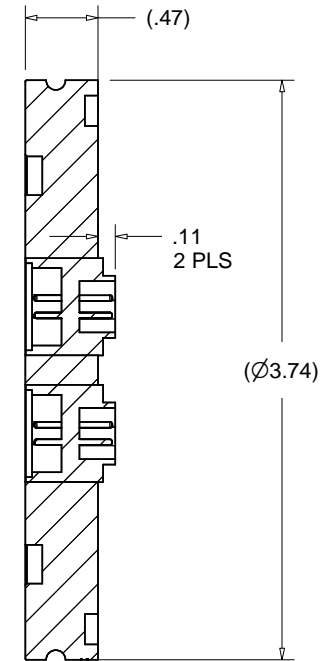
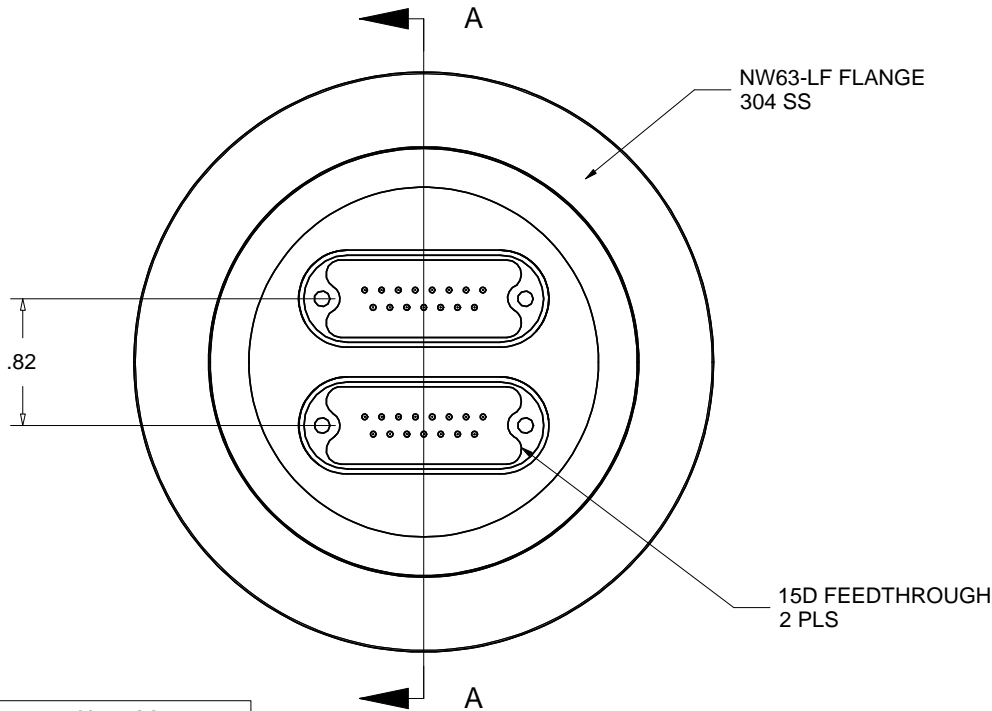
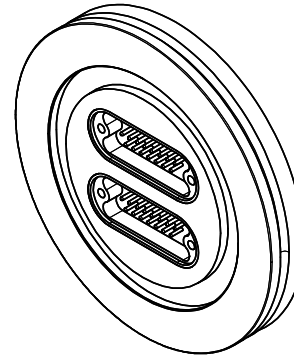


**PROPRIETARY AND CONFIDENTIAL**  
 THE INFORMATION CONTAINED IN THIS DRAWING IS THE SOLE PROPERTY OF ACCU-GLASS PRODUCTS INC. ANY REPRODUCTION IN PART OR AS WHOLE WITHOUT THE WRITTEN PERMISSION OF ACCU-GLASS PRODUCTS INC. IS **PROHIBITED.**

Specifications:

Voltage	500 VDC
Current	5A Max. @ 20° C (per pin up to 20% of total number of pins)
Temperature	-26° C to 150° C (Dependant on O-ring type used)
Vacuum Level	HV 1x10 <sup>-8</sup> Torr.

Rev	Description	Date	Approved
A	INITIAL RELEASE	020810	C M



Section A-A

Related Flange Hardware	NW63 LF ISO Flange
P/N 202240,	Centering Ring - Stainless / Viton
P/N 210550,	Double Claw Clamp - Aluminum
P/N 210553,	Single Claw Clamp - Aluminum



Accu-Glass Products Inc.  
 25047 Anza Drive  
 Valencia, CA 91355  
 TEL 818-365-4215  
 FAX 818-365-7074  
 accuglassproducts.com

- Notes:
1. No detectable leaks @ 5x10<sup>-10</sup> cc/s He.
  2. DIM'S SYM ABOUT CENTERLINES

**\*UNCONTROLLED WEB COPY\***

Material SEE ABOVE	
Tolerances unless otherwise specified.	
.X ± .03	Angular: +/- .5°
.XX ± .01	Finish: Min. 63 Ra
.XXX ± .005	

Title: <b>15D2-L63</b> NW64-LF FLANGE WITH 2EA 15D FEEDTHROUGHS			
Drawn By Date	CR 062209	DWG. NO. <b>111007</b>	Rev. <b>A</b>
Approved	C M	PDFE	Sheet 1 OF 1