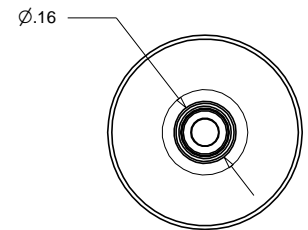
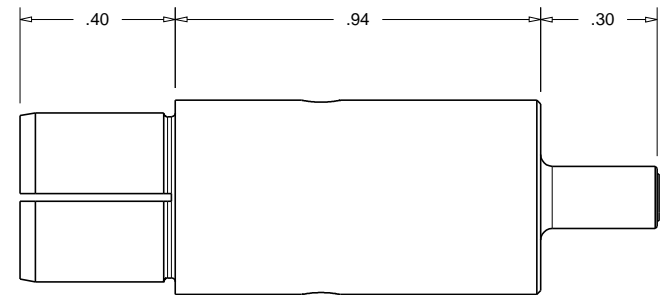
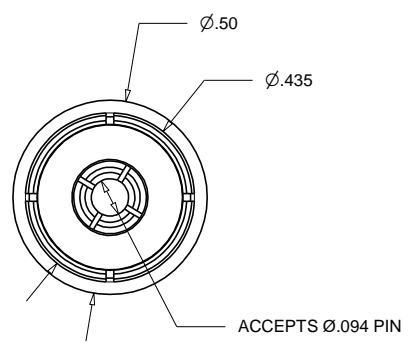
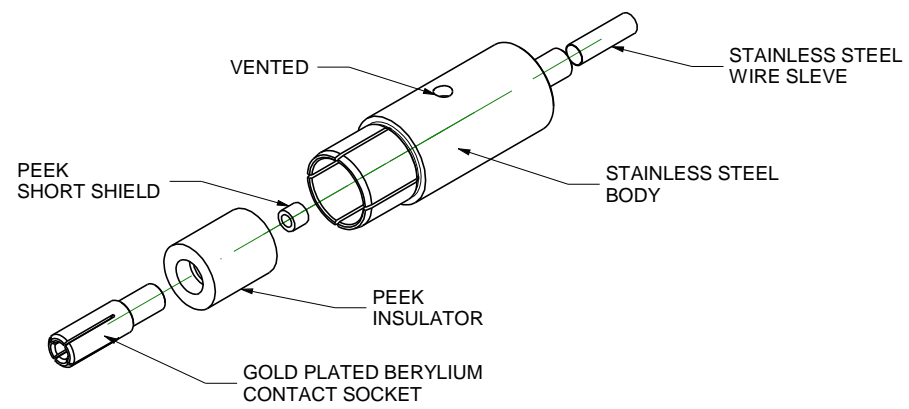


PROPRIETARY AND CONFIDENTIAL
 THE INFORMATION CONTAINED IN THIS DRAWING IS THE SOLE PROPERTY OF ACCU-GLASS PRODUCTS INC. ANY REPRODUCTION IN PART OR AS WHOLE WITHOUT THE WRITTEN PERMISSION OF ACCU-GLASS PRODUCTS INC. IS **PROHIBITED.**

Rev	Description	Date	Approved
A	INITIAL RELEASE		

CONNECTOR ASSEMBLY INCLUDES:



NOTE:
 SEE A111020 ASSEMBLY INSTRUCTIONS.
 FOR PROPER ASSEMBLY



Accu-Glass Products Inc.
 25047 Anza Drive
 Valencia, CA 91355
 TEL 818-365-4215
 FAX 818-365-7074
 accuglassproducts.com

Notes:
 1. DIMENSIONS SYMMETRICAL ABOUT CENTERLINES
 2.
UNCONTROLLED WEB COPY

Material assembly	
Tolerances unless otherwise specified.	
.X ± .03	Angular: +/- .5°
.XX ± .01	Finish: Min. 63 Ra
.XXX ± .005	

Title: AF500 ACCUFASST 500 COAXIAL CONNECTOR ASSEMBLY			
Drawn By Date	CR 4/18/2012	DWG. NO. 111020	Rev. A
Approved	C M	PDFE	Sheet 1 OF 1