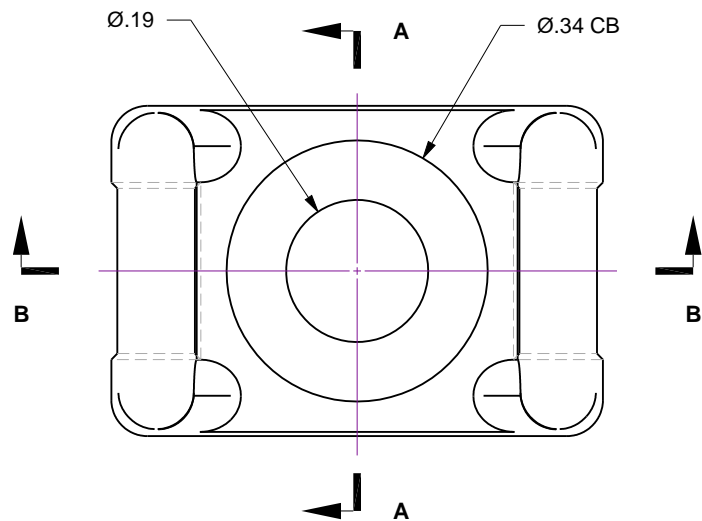


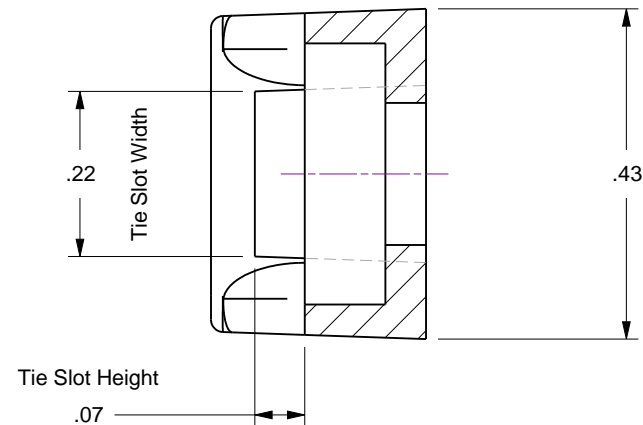
Notes

1. PEEK cable tie mount can be fastened to flat chamber wall or in-vacuum structure using vented #8 or M4 screws (sold separately).
2. Use with AG PEEK cable tie parts 111155, 111156 and 111157 (sold separately).

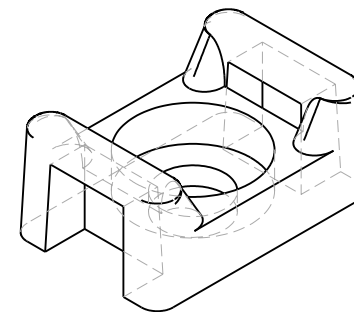
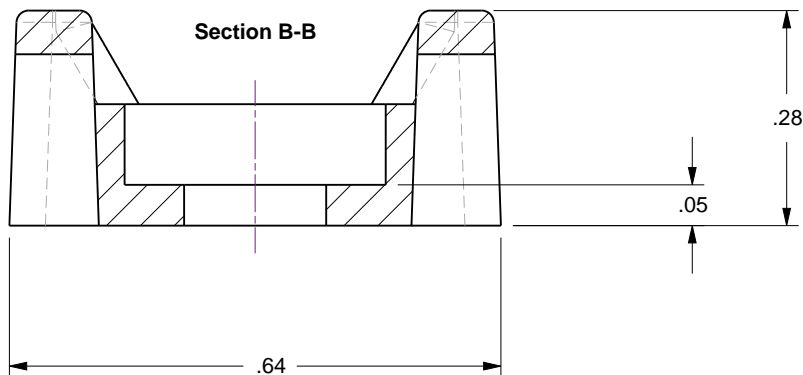
Rev	Description	Date
A	Initial Release	



Section A-A



Section B-B



Accu-Glass Products Inc.
 25047 Anza Drive
 Valencia, CA 91355
 T 818-365-4215
 F 818-365-7074
 www.accuglassproducts.com

UNCONTROLLED WEB DRAWING

Proprietary and Confidential
 The information contained in this drawing is the sole property of Accu-Glass, Products Inc. Any reproduction, in part or as whole, without the written permission of Accu-Glass Products, Inc., is strictly prohibited.

Material

PEEK

Tolerances,
unless otherwise specified

.X ± .030

.XX ± .010

.XXX ± .005

Angles ± 0.5°
Finish 63Ra

Title

Cable Tie Mount, Screw-Type

Drawn by
DateLigeti
7/28/2014No. **111158**

Rev.

A

Approved

Sheet