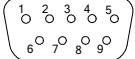
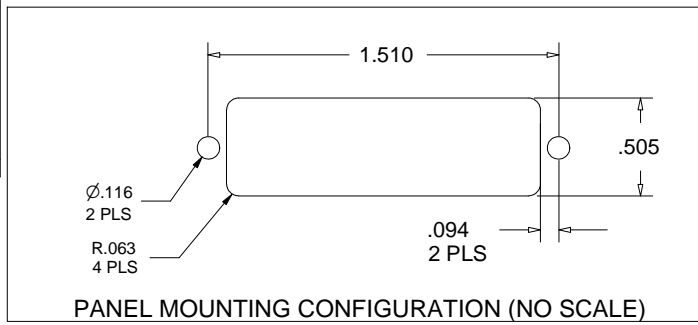


PROPRIETARY AND CONFIDENTIAL
 THE INFORMATION CONTAINED IN THIS DRAWING IS THE SOLE PROPERTY OF ACCU-GLASS PRODUCTS INC. ANY REPRODUCTION IN PART OR AS WHOLE WITHOUT THE WRITTEN PERMISSION OF ACCU-GLASS PRODUCTS INC. IS **PROHIBITED.**

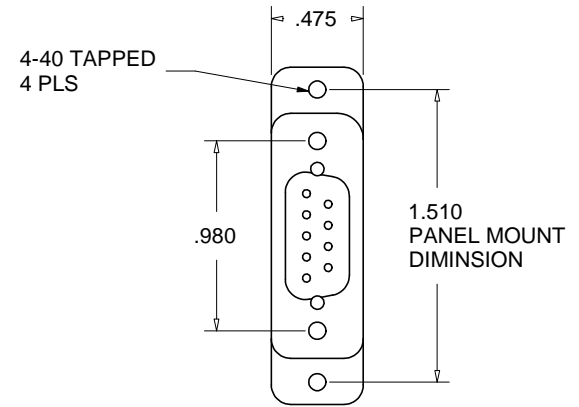
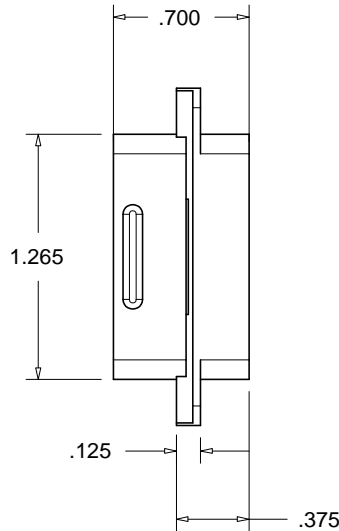
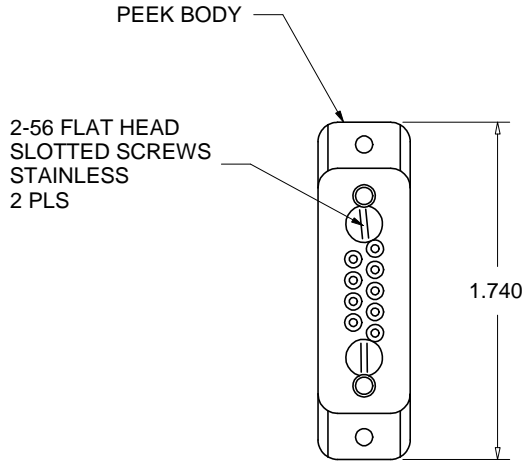
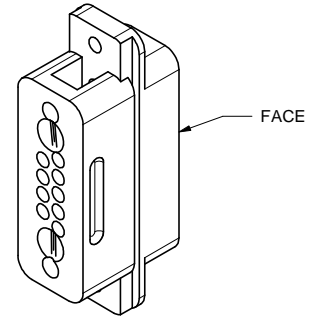
PIN NUMBER ASSIGNMENTS
 MALE 9D CONNECTOR



FACE VIEW



Rev	Description	Date	Approved
A	INITIAL RELEASE		



RELATED CONTACTS, TYPE-T1 (MALE)
 P/N 100170, STANDARD, USE WITH 20-24AWG WIRE
 P/N 100171, STANDARD, USE WITH 26-30AWG WIRE
 P/N 100190, CRIMP TOOL FOR TYPE-T1 CONTACTS
 P/N 100445, PEEK, BACKSHELL STRAIN RELIEF

*NOTE: CONTACT RETAINING COMBS INCLUDED (NOT SHOWN)



Accu-Glass Products Inc.
 25047 Anza Drive
 Valencia, CA 91355
 TEL 818-365-4215
 FAX 818-365-7074
 accuglassproducts.com

Notes:
 1. DIM'S SYM ABOUT CENTERLINES
 2. DOES NOT INCLUDE CONTACT PINS

UNCONTROLLED WEB COPY

Material SEE ABOVE	
Tolerances unless otherwise specified.	
.X ± .03	Angular: +/- .5°
.XX ± .01	Finish: Min. 63 Ra
.XXX ± .005	

Title: 9D-PKP-E PEEK 9D MALE CONNECTOR WITH EARS			
Drawn By Date	CR 061709	DWG. NO. 112125	Rev. A
Approved	C M	PDFE	Sheet 1 OF 1