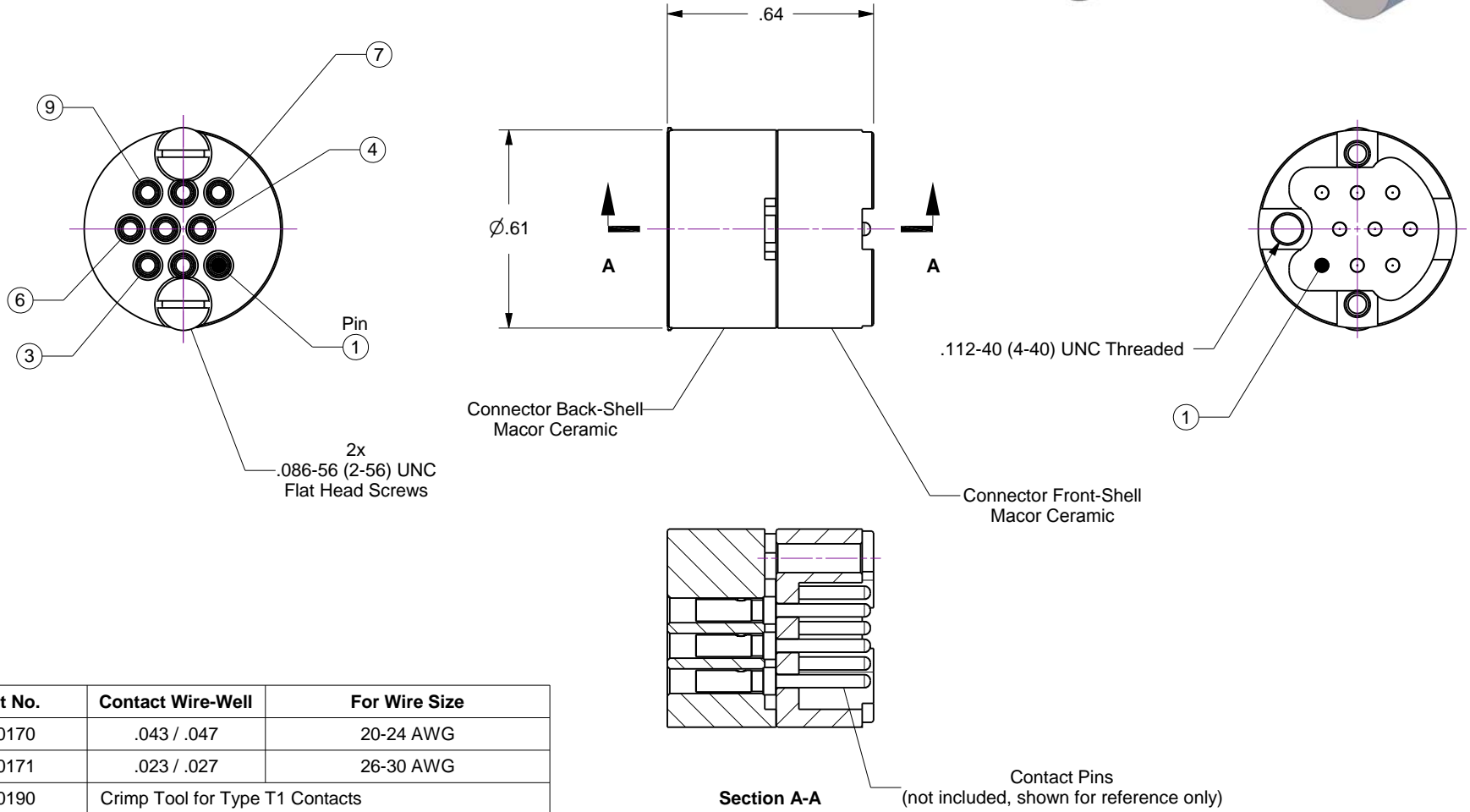
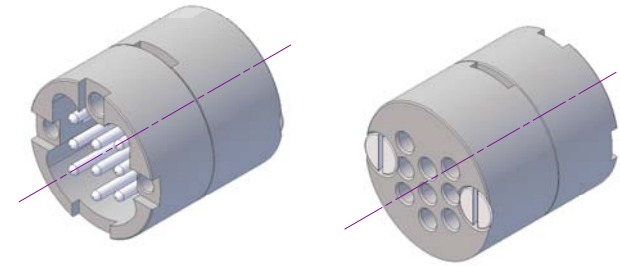


Notes

1. Connectors do not include contact pins... and these must be purchased separately.
See table (below) for available contact options and tools.
2. Thread wires through connector back-shell before crimping contacts.
3. Pin position numbers do not appear on connector and are provided for reference only.

Rev	Description	Date
A	Initial Release	



Part No.	Contact Wire-Well	For Wire Size
100170	.043 / .047	20-24 AWG
100171	.023 / .027	26-30 AWG
100190	Crimp Tool for Type T1 Contacts	



Accu-Glass Products Inc.
 25047 Anza Drive
 Valencia, CA 91355
 T 818-365-4215
 F 818-365-7074
 www.accuglassproducts.com

UNCONTROLLED WEB DRAWING

Proprietary and Confidential
 The information contained in this drawing is the sole property of Accu-Glass, Products Inc. Any reproduction, in part or as whole, without the written permission of Accu-Glass Products, Inc., is strictly prohibited.

Material See Individual Components	
Tolerances, unless otherwise specified	
.X ± .030	Angles ± 0.5°
.XX ± .010	Finish 63Ra
.XXX ± .005	

Title Connector, 9-Pin Subminiature-C Male Ceramic			
Drawn by Date	Ligeti 9/11/2014	No. 112701	Rev. A
Approved		PDFE	Sheet