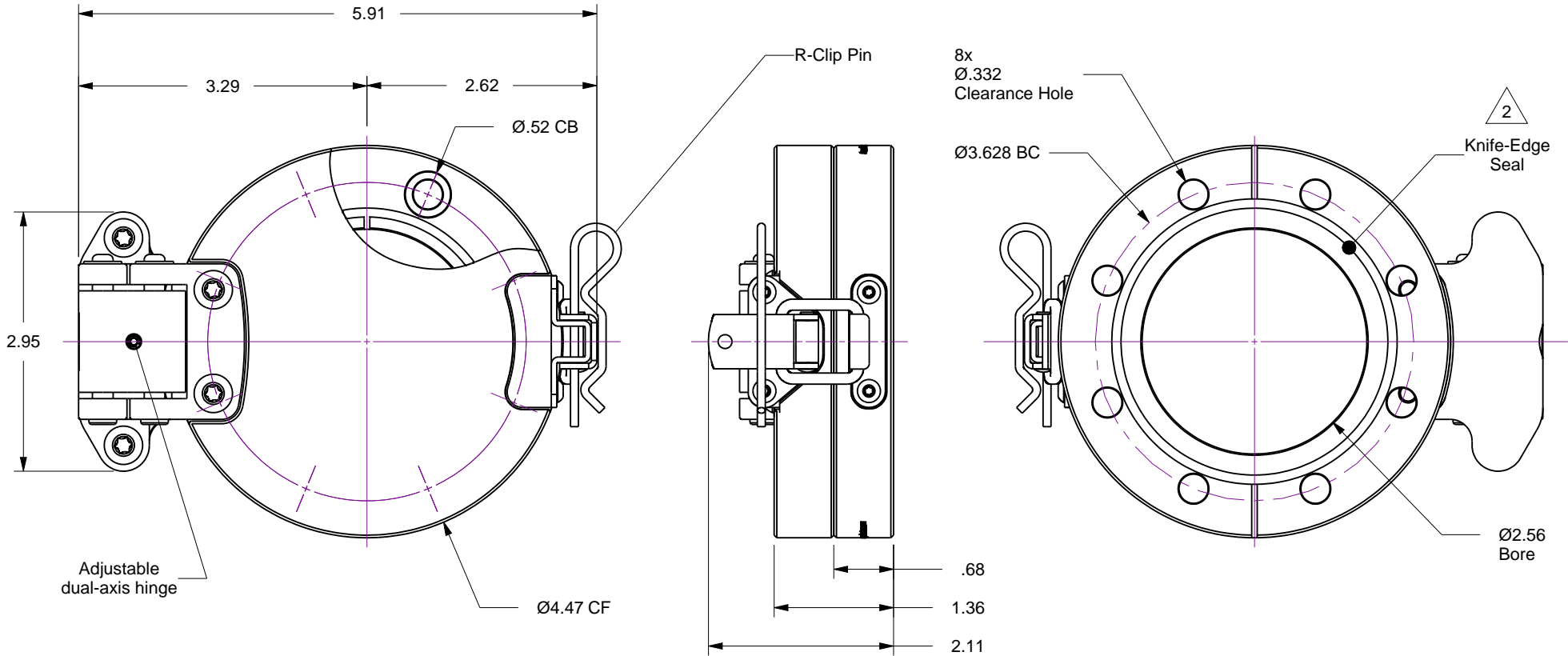


Notes

- 1. Leak test to 5x10E-10 Standard cc/sec of He
- 2. Protect seal surfaces (knife-edge) from damage.
- 3. Standard hinge is adjusted for 195-degree swing-angle
- 4. Install door-stop kit No. 112980 if 120-degree hinge swing-angle is desired (sold separately).

Rev	Description	Date
A	Initial Release	



A

B

C

D



**Accu-Glass Products Inc.**  
 25047 Anza Drive  
 Valencia, CA 91355  
 T 818-365-4215  
 F 818-365-7074  
 www.accuglassproducts.com

**UNCONTROLLED WEB DRAWING**

Proprietary and Confidential  
 The information contained in this drawing is the sole property of Accu-Glass, Products Inc. Any reproduction, in part or as whole, without the written permission of Accu-Glass Products, Inc., is strictly prohibited.

Material See Individual Components	
Tolerances, unless otherwise specified	
.X ± .030	Angles ± 0.5° Finish 63Ra
.XX ± .010	
.XXX ± .005	

Title <b>Access Door, 4.50 CF Blank w/Clearance Holes</b>			
Drawn by Date	Ligeti 8/27/2015	No. <b>112921</b>	Rev. <b>A</b>
Approved			Sheet