

Notes

- 1. Bulkhead-D feedthrough flange detail is the same for 9, 15 25 and 50-pin.
- 2. Leak test to 5x10E-10 Standard cc/sec of He.
- 3. Each assembly includes one (1) Viton gasket, four (4) #8-32 x 5/8" legh socket-head screws, and four (4) washers.
- 4 Spare gasket and fasteners are AG part No. 113096 and 113097 respectively.

Rev	Description	Date
A	Initial Release	

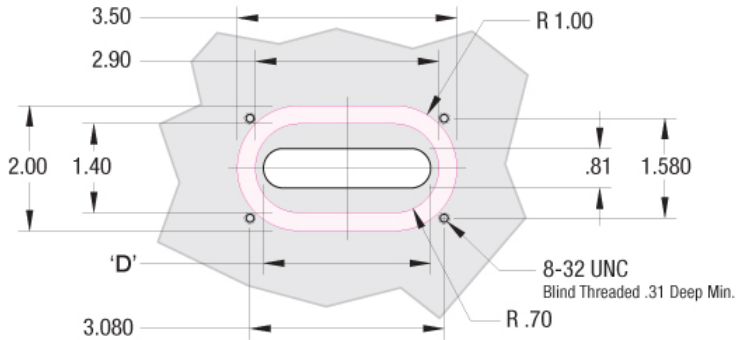
Bulkhead-D™

Air-side chamber wall / bulkhead machining detail

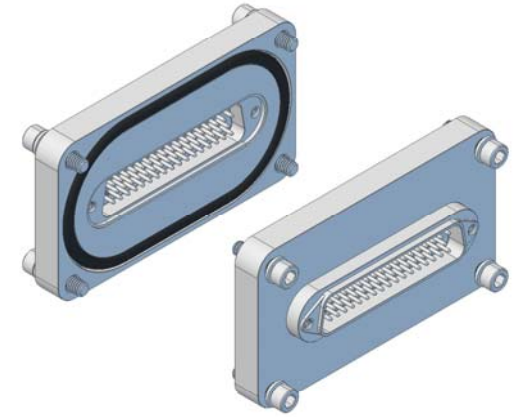
32 Ra Circular Finish

'D' Dimension

- 9-Pin 1.47
- 15-Pin 1.80
- 25-Pin 2.34
- 50-Pin 2.84

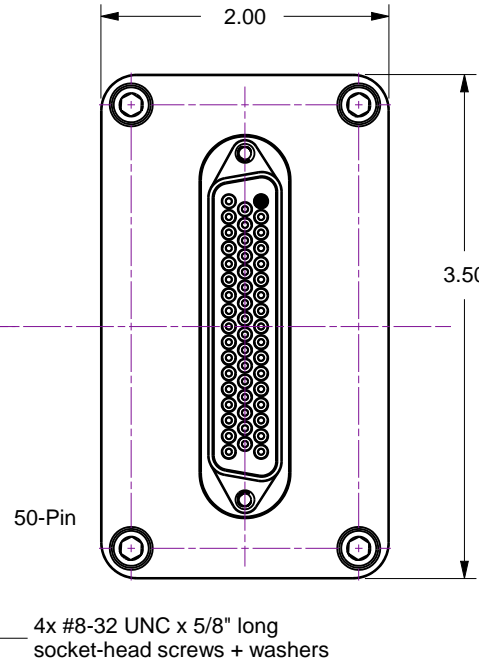
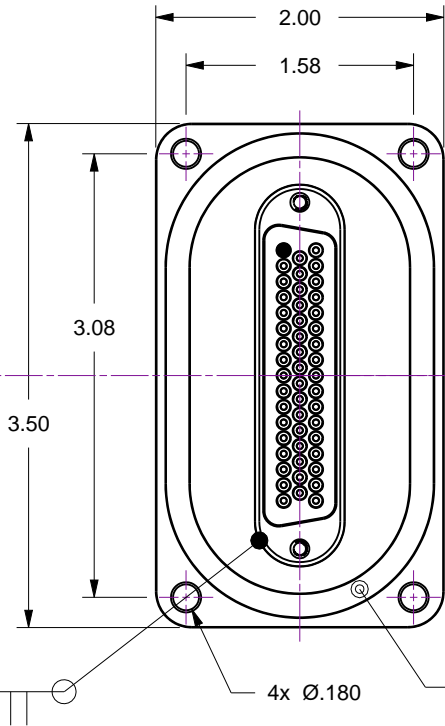
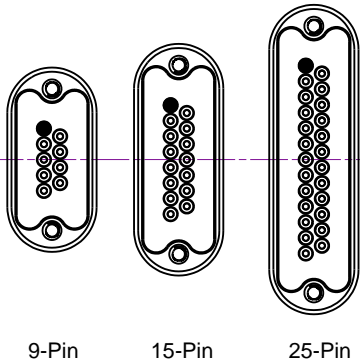


Part No.	No. of Pins
113090	9
113091	15
113092	25
113093	50



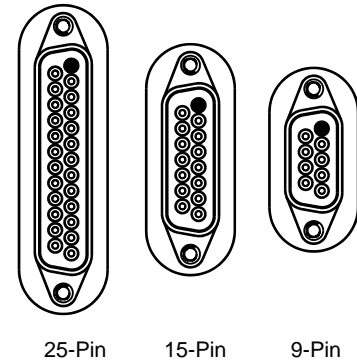
Vacuum Side Detail

● Pin-1 Position



Air Side Detail

● Pin-1 Position



UNCONTROLLED WEB DRAWING

Proprietary and Confidential
 The information contained in this drawing is the sole property of Accu-Glass, Products Inc. Any reproduction, in part or as whole, without the written permission of Accu-Glass Products, Inc., is strictly prohibited.

Material See individual components	
Tolerances, unless otherwise specified	
.X ± .030	Angles ± 0.5°
.XX ± .010	Finish 63Ra
.XXX ± .005	

Title Bulkhead-D 9, 15, 25 and 50-Pin Feedthroughs			
Drawn by Date	Ligeti 11/06/2014	No.	11309x
Approved		Rev.	A
			Sheet



Accu-Glass Products Inc.
 25047 Anza Drive
 Valencia, CA 91355
 T 818-365-4215
 F 818-365-7074
 www.accuglassproducts.com

A

B

C

D