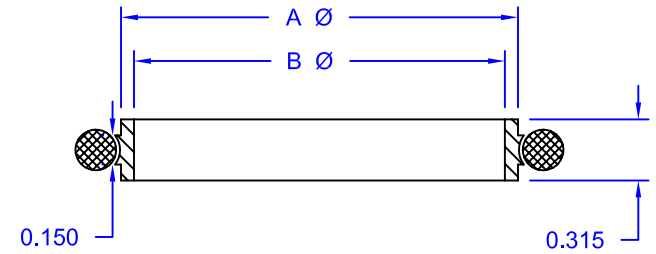


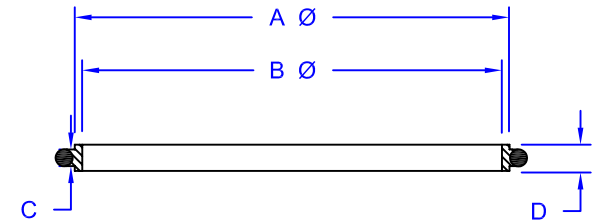
STANDARD CENTERING RING

REVISIONS			
REV	DESCRIPTION	DATE	APPROVED

PART NO.	MODEL NO.	ISO REF.	A	B	O-ring I.D.	TUBE SIZE
202200	CRV-SS-K16	NW16	0.66	0.63	0.73	3/4
202210	CRV-SS-K25	NW25	1.02	0.97	1.10	1
202220	CRV-SS-K40	NW40	1.61	1.55	1.60	1-1/2
202230	CRV-SS-K50	NW50	2.05	1.97	2.10	2



PART NO.	MODEL NO.	ISO REF.	A	B	C	D	O-ring I.D.	TUBE SIZE
202240	CRV-SS-L63	NW63	2.73	2.61	.158	.327	2.85	2-1/2
202251	CRV-SS-L80	NW80	3.26	3.14	.158	.327	3.35	3
202262	CRV-SS-L100	NW100	3.99	3.86	.158	.327	4.10	4
202273	CRV-SS-L160	NW160	5.99	5.87	.158	.327	5.98	6
202284	CRV-SS-L200	NW200	8.35	8.23	.158	.327	8.48	8
202295	CRV-SS-L250	NW250	10.25	10.13	.158	.327	10.48	10
202306	CRV-SS-L320	NW320	12.46	12.25	.218	.552	12.48	12-3/4
202317	CRV-SS-L400	NW400	15.67	15.47	.218	.552	15.48	16
202328	CRV-SS-L500	NW500	19.65	19.45	.218	.552	19.46	20



Accu-Glass Products Inc.
25047 Anza Drive
Valencia, CA 91355
TEL 818-365-4215
FAX 818-365-7074
accuglassproducts.com

Notes

* UNCONTROLLED WEB COPY *

Material
304 SS

Tolerances unless otherwise specified
Decimal Angular
.xx= +/- .005 +/- 1°
.xxx= +/- .002

Title
ISO Centering Rings

Drawn By	M.Wilson	DWG NO.	A0021	Date	8-7-07
Approved		PDFE	SHEET		