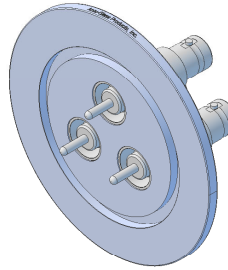
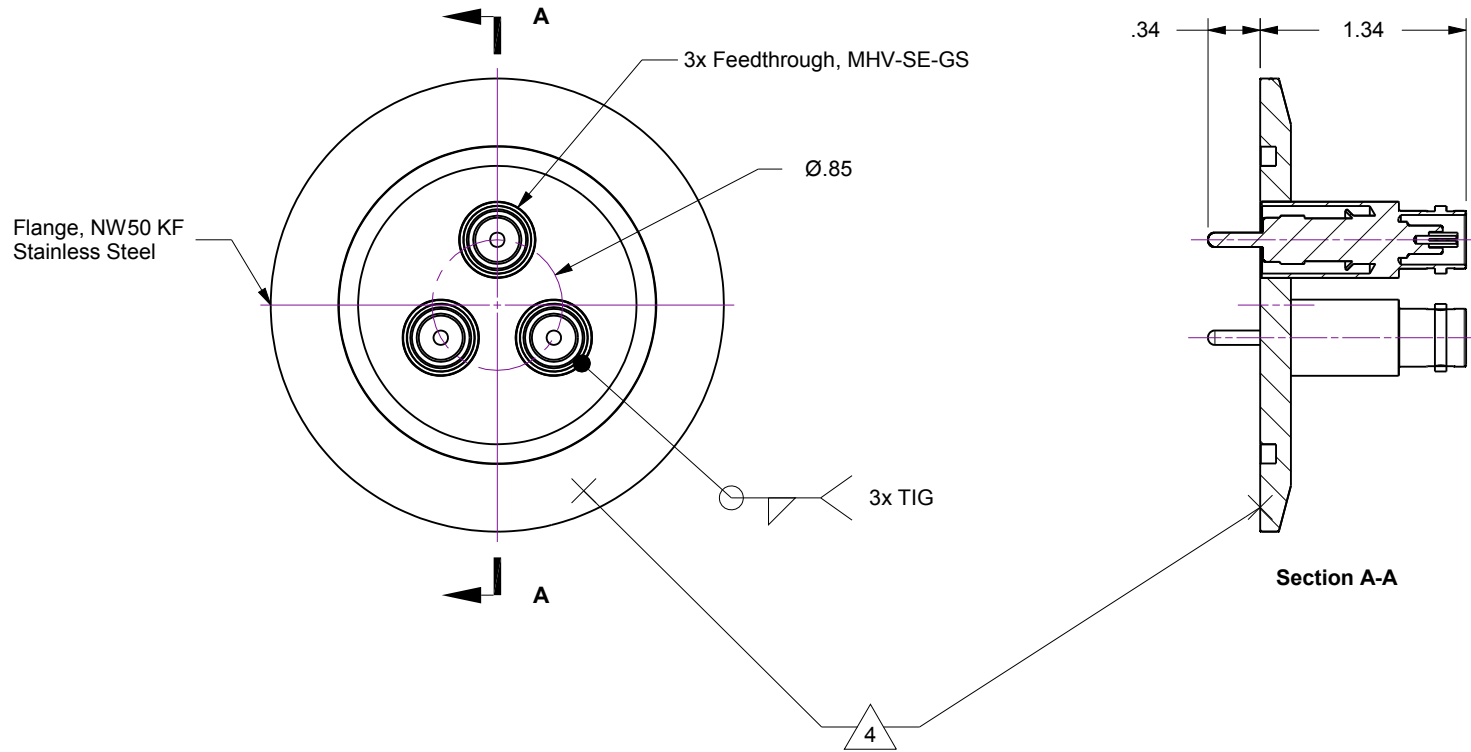


Notes

- 1. MHV-GS3-K50... 3 ea. Grounded Shield MHV Feedthroughs mounted on ISO NW50 KF Flange
- 2. Leak Tested To 5x10E-10 standard cc/se of He.
- 3. Dimensions Symmetrical About Centerlines.
- 4. Protect Seal Surface From Damage.



Rev	Description	Date
A	Initial Release	



Accu-Glass Products Inc.
 25047 Anza Drive
 Valencia, CA 91355
 T 818-365-4215
 F 818-365-7074
 www.accuglassproducts.com

UNCONTROLLED WEB DRAWING

Proprietary and Confidential
 The information contained in this drawing is the sole property of Accu-Glass, Products Inc. Any reproduction, in part or as whole, without the written permission of Accu-Glass Products, Inc., is strictly prohibited.

Material See Individual Components	
Tolerances, unless otherwise specified	
.X ± .030	Angles ± 0.5° Finish 63Ra
.XX ± .010	
.XXX ± .005	

Title MHV-GS3-K50			
Drawn by Farrell	Date 5/16/2017	No. 110153	Rev. A
Approved			Sheet