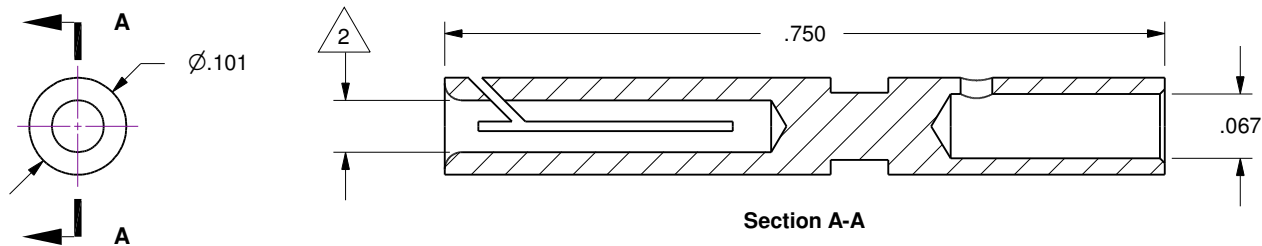
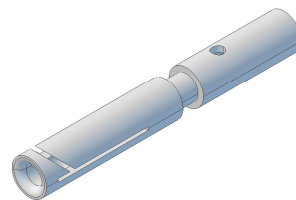


Notes

- 1. Contact Is Recommended For Straight Wire Hookup Or Where A Mating Male Center Conductor Is Available.
- 2. Accepts Pin Size 0.062.

Rev.	Description	Date	Made By	Approval
A	Initial Release	10/29/2018	Farrell	



**Accu-Glass Products Inc.**  
 25047 Anza Drive  
 Valencia, CA 91355  
 T 818-365-4215  
 F 818-365-7074  
 www.accuglassproducts.com

**UNCONTROLLED WEB DRAWING**

Proprietary and Confidential  
 The information contained in this drawing is the sole property of Accu-Glass, Products Inc. Any reproduction, in part or as whole, without the written permission of Accu-Glass Products, Inc., is strictly prohibited.

Material Beryllium-Copper, Gold Plated	
Tolerances, unless otherwise specified	
.X ± .030	Angles ± 0.5° Finish 63Ra
.XX ± .010	
.XXX ± .005	

Title <b>BeCuGS-062-5</b>			
Drawn by Date	Farrell 10/29/2018	No. <b>112779</b>	Rev. <b>A</b>
Approved			Sheet