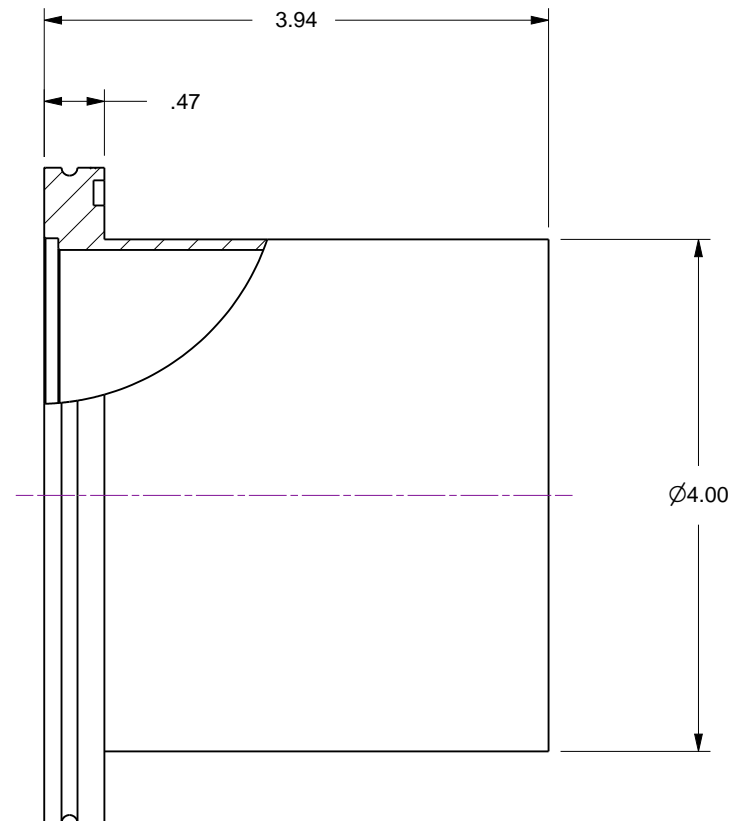
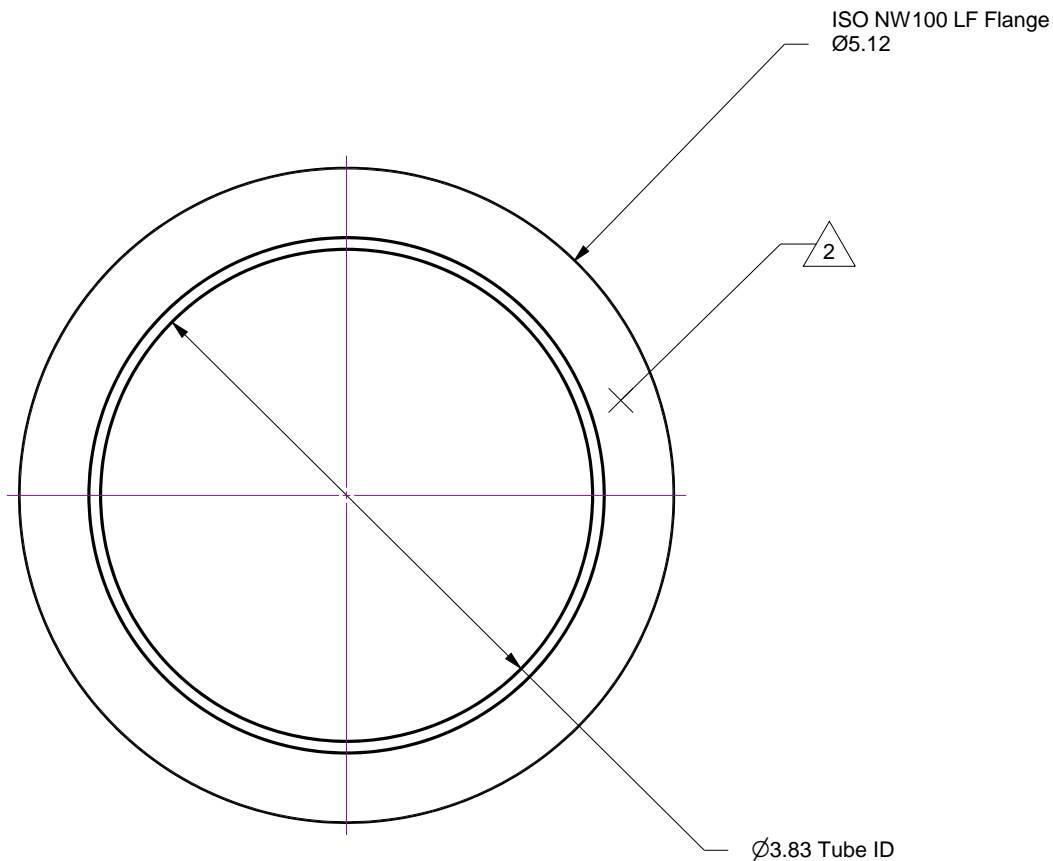
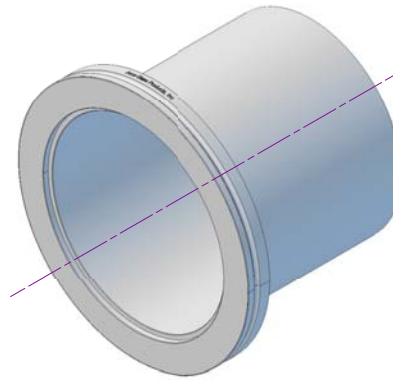


Notes

1. Half-Nipple 4.00 with ISO NW100 LF Flange
2. Protect flange O-ring seal surface from damage
3. Leak test to 5x10E-10 Standard cc/sec of He

| Rev. | Description | Date | Made By | Approval |
|------|-----------------|------|---------|----------|
| A | Initial Release | | | |



Accu-Glass Products Inc.
25047 Anza Drive
Valencia, CA 91355
T 818-365-4215
F 818-365-7074
www.accuglassproducts.com

UNCONTROLLED WEB DRAWING

Proprietary and Confidential
The information contained in this drawing is the sole property of Accu-Glass, Products Inc. Any reproduction, in part or as whole, without the written permission of Accu-Glass Products, Inc., is strictly prohibited.

| | |
|---|------------------------------|
| Material Stainless Steel, 304 | |
| Tolerances, unless otherwise specified | |
| .X ± .030 | Angles ± 0.5° Finish 63Ra |
| .XX ± .010 | |
| .XXX ± .005 | |

| | | | |
|---|---------------------|-------------------|---------------|
| Title Nipple, Half / 4.0 ISO NW100 LF Flange | | | |
| Drawn by Date | Ligeti 10/1/2018 | No. 210603 | Rev. A |
| Approved | | | Sheet |